

Overview of Programs for Persons with Disabilities

January 25, 2001

**Prepared by: House Research Department
House Fiscal Analysis Department**

Outline of Presentation

- Semi-independent Living Services (SILS)
- Consumer Support Grants
- Family Support Grants
- Waivered Services
- ICFs/MR

SILS

Semi-Independent Living Services

State and county funded program that provides services to adults who have mental retardation or a related condition, to enable these individuals to remain in the community.

January 25, 2001

House Research Dept./House Fiscal
Analysis Dept.

3

SILS

Eligibility

Individual must be:

- age 18 or older
- have mental retardation or a related condition
- unable to function independently without semi-independent living services
- not be at risk of ICF/MR placement

January 25, 2001

House Research Dept./House Fiscal
Analysis Dept.

4

SILS Services

- Services reimbursed through SILS are: training and assistance in managing money, preparing meals, shopping, maintaining personal appearance and hygiene, telephone use, socialization skills, accessing public transportation, and other activities needed to maintain and improve an individual's ability to live in the community.
- State on average pays 70% of the cost of services, counties 30%.
- Total cost cannot exceed average state share of ICF-MR costs.

January 25, 2001

House Research Dept./House Fiscal
Analysis Dept.

5

SILS Program Statistics

- Total state cost: \$7.2 million in FY 2001
- Financing: state (70%)/ county (30%)
- Total served: 1,584 in calendar year 1999
- Average annual cost: \$3,913 per participant in calendar year 1999

January 25, 2001

House Research Dept./House Fiscal
Analysis Dept.

6

Consumer Support Grants

State funded grant program designed to prevent or delay out-of-home placement for persons with disabilities and chronic illness. Participation in this program is voluntary for counties.

January 25, 2001

House Research Dept./House Fiscal
Analysis Dept.

Consumer Support Grants Eligibility

- Individual is eligible for and has been approved to receive services under MA or the Alternative Care program, or has been approved for a family support grant.
- Individual is able to direct and purchase care, or has a family member or representative who can do this.
- Individual has functional limitations, requires ongoing support to remain in community, and is at risk of institutionalization without such support.

January 25, 2001

House Research Dept./House Fiscal
Analysis Dept.

8

Consumer Support Grants Eligibility (cont.)

- Individual will live at home (own home or that of a family member).
- Individual is not receiving waived services, personal care or home health aide services under Medical Assistance, a family support grant, or alternative care services, and is not residing in an institutional or congregate care setting.

January 25, 2001

House Research Dept./House Fiscal
Analysis Dept.

9

Consumer Support Grants Benefits

- Grants can be used to pay for supports that are over and above the cost of caring for persons without a disability or chronic illness. Supports include assistance with daily living, modifications to a home or care, assistive technology, respite care, and medical supports.
- Supports can be purchased from friends, neighbors, relatives, or other persons (specific criteria apply to private duty nursing).

January 25, 2001

House Research Dept./House Fiscal
Analysis Dept.

10

Consumer Support Grants Program Statistics

- Total allocation: \$5.3 million in FY 2001
- Financing: state general fund
- Average monthly recipients: 317
- Average monthly allocation: \$1,052

January 25, 2001

House Research Dept./House Fiscal
Analysis Dept.

11

Family Support Grants

State funded program that provides grants to families of children under age 22 with mental retardation or a related condition, to enable these children to remain in the home.

January 25, 2001

House Research Dept./House Fiscal
Analysis Dept.

12

Family Support Grants Eligibility

- Family must have a child or dependent under age 22 with mental retardation or a related condition.
- Child or dependent must be at risk of institutionalization.
- Family cannot be receiving services under the MR/RC waiver.
- Family income cannot exceed \$73,446, except in cases of extreme hardship.

January 25, 2001

House Research Dept./House Fiscal
Analysis Dept.

13

Family Support Grants Benefits

- Grant can be used for services and items that are over and above the normal cost of caring for an individual without a disability.
- Services and items include: respite care, home and vehicle modifications, special equipment, adaptive clothing, day care, transportation, educational expenses, and medications.
- Maximum monthly grant is \$250 per dependent, and \$3,000 per state fiscal year.

January 25, 2001

House Research Dept./House Fiscal
Analysis Dept.

14

Family Support Program Statistics

- Total cost: \$4.1 million in FY 2001
- Financing: state general fund
- Total served: 1,188
- Average cost per participant: \$2,183

January 25, 2001

House Research Dept./House Fiscal
Analysis Dept.

15

Waivered Services for Persons with Disabilities

Home and community-based waivers allow states to develop community-based alternatives to the placement of persons in medical facilities. Through the waiver of certain federal Medicaid requirements, states can cover services that would not normally be covered under MA.

January 25, 2001

House Research Dept./House Fiscal
Analysis Dept.

16

Waivered Services Minnesota Programs

- Minnesota offers four waived services programs for persons with disabilities, in addition to the elderly waiver.
- Mental Retardation or Related Conditions (MR/RC) waiver: serves persons with developmental disabilities at risk of ICF/MR placement.
- Community Alternatives for Disabled Individuals (CADI) waiver: serves persons under age 65 who require nursing facility level care.

January 25, 2001

House Research Dept./House Fiscal
Analysis Dept.

17

Waivered Services Minnesota Programs (cont.)

- Community Alternatives for Chronically Ill Individuals (CAC) waiver: serves persons under age 65 at risk of inpatient hospital care.
- Traumatic Brain Injury (TBI) waiver: serves persons under age 65 with traumatic brain injury.

January 25, 2001

House Research Dept./House Fiscal
Analysis Dept.

18

Waivered Services Eligibility

- Eligible for MA (income of spouse and parents not counted)
- Certified as disabled
- At risk of institutional care
- MA community care costs must be less than cost of MA institutional care

January 25, 2001

House Research Dept./House Fiscal
Analysis Dept.

19

Waivered Services Covered Services

- Covered services vary across the waiver programs. Each program's service package is designed to meet the needs of the persons served by the waiver.
- Some services such as regular MA services, case management, homemaker services, and respite care are available under all waiver programs.

January 25, 2001

House Research Dept./House Fiscal
Analysis Dept.

20

Waivered Services Covered Services (cont.)

- Most services are available under only some of the waiver programs. E.g. day habilitation is available only through MR/RC waiver, extended home health services are available through all but the MR/RC waiver.
- Waivers can pay only for medical and health-related services, not room and board.

January 25, 2001

House Research Dept./House Fiscal
Analysis Dept

21

Waiver for People with Developmental Disabilities (DD) or Mental Retardation or Related Condition (MR/RC) Program Statistics

- Total cost: \$526.6 million in FY 2001
- Financing: state 50% /federal 50% (est.)
- Average monthly recipients: 8,386
- Average monthly cost: \$5,233

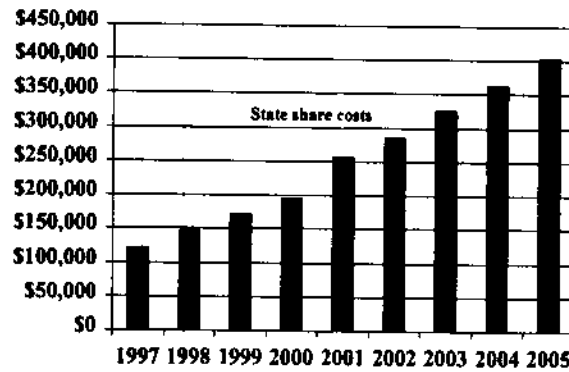
January 25, 2001

House Research Dept./House Fiscal
Analysis Dept

22

Waiver for People with Developmental Disabilities (DD) or Mental Retardation or Related Condition (MR/RC)

(dollars in thousands)



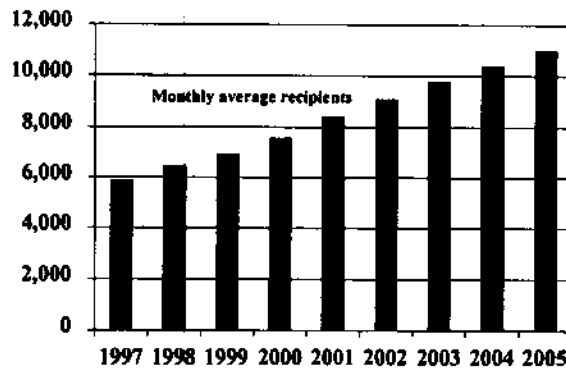
Source: November 2000 forecast, Department of Human Services.

January 25, 2001

House Research Dept./House Fiscal
Analysis Dept.

21

Waiver for People with Developmental Disabilities (DD) or Mental Retardation or Related Condition (MR/RC)



Source: November 2000 forecast, Department of Human Services.

January 25, 2001

House Research Dept./House Fiscal
Analysis Dept.

24

Community Alternatives for Disabled Individuals (CADI) Program Statistics

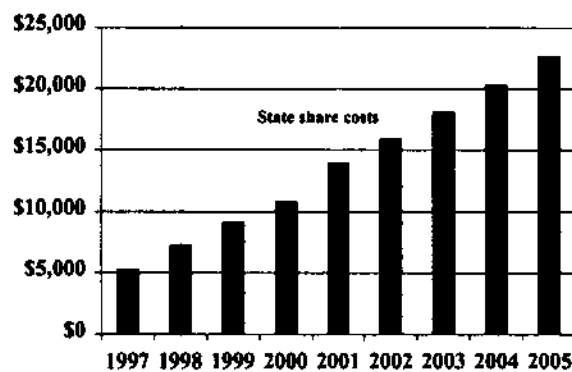
- Total cost: \$28.6 million in FY 2001
- Financing: state 50%/ Federal 50% (est.)
- Average monthly recipients: 3,006
- Average monthly cost: \$779.93

January 25, 2001

House Research Dept./House Fiscal
Analysis Dept.

25

Community Alternatives for Disabled Individuals (CADI) (dollars in thousands)



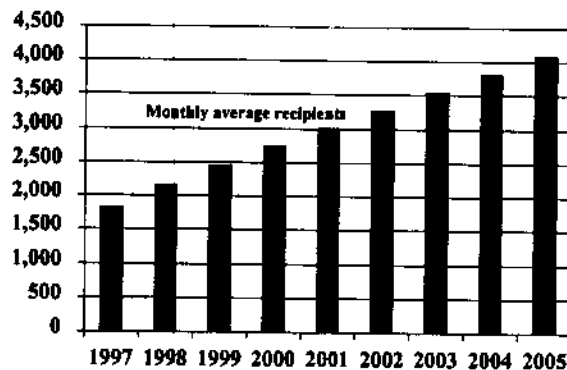
Source: November 2000 forecast, Department of Human Services

January 25, 2001

House Research Dept./House Fiscal
Analysis Dept.

26

Community Alternatives for Disabled Individuals



Source: November 2000 forecast, Department of Human Services

January 25, 2001

House Research Dept./House Fiscal
Analysis Dept.

27

Community Alternative Care (CAC) Program Statistics

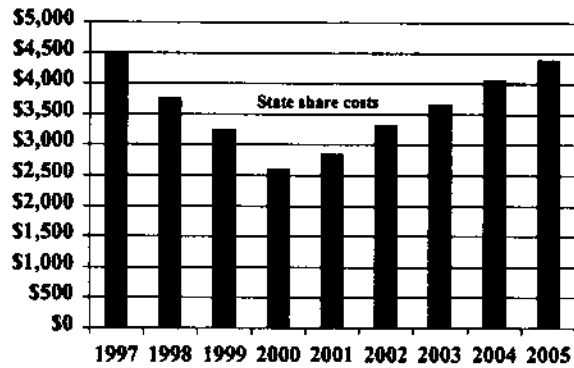
- Total cost: \$5.8 million in FY 2001
- Financing: state 50%/ federal 50% (est.)
- Average monthly recipients: 104
- Average monthly cost: \$4,873

January 25, 2001

House Research Dept./House Fiscal
Analysis Dept.

28

Community Alternative Care (CAC) (dollars in thousands)



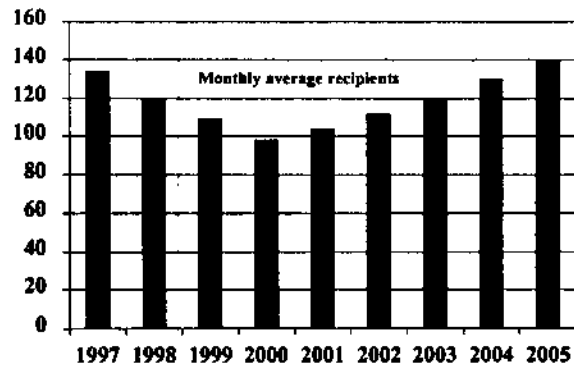
Source: November 2000 forecast, Department of Human Services

January 25, 2001

House Research Dept./House Fiscal
Analysis Dept.

29

Community Alternative Care (CAC)



Source: November 2000 forecast, Department of Human Services

January 25, 2001

House Research Dept./House Fiscal
Analysis Dept.

30

Traumatic Brain Injury Waiver Program Statistics

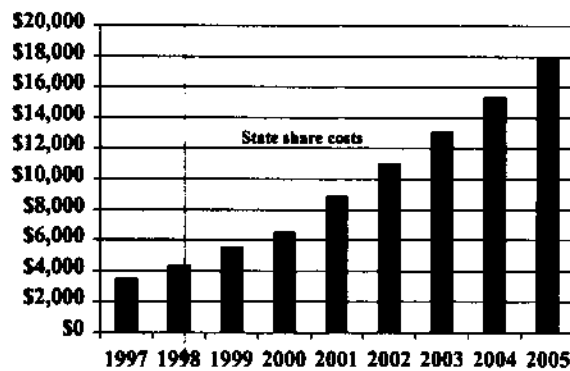
- Total cost: \$18.2 million in FY 2001
- Financing: state 50%/ federal 50% (est.)
- Average monthly recipients: 418
- Average monthly cost: \$3,649

January 25, 2001

House Research Dept./House Fiscal
Analysis Dept.

31

Traumatic Brain Injury Waiver (TBI) (dollars in thousands)



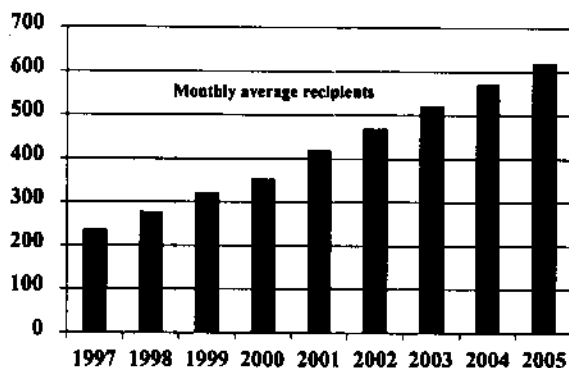
Source: November 2000 forecast, Department of Human Services.

January 25, 2001

House Research Dept./House Fiscal
Analysis Dept.

32

Traumatic Brain Injury Waiver (TBI)



Source: November 2000 forecast, Department of Human Services

January 25, 2001

House Research Dept./House Fiscal
Analysis Dept.

33

ICFs/MR

Intermediate Care Facilities for Persons with Mental Retardation and Related Conditions

- ICFs/MR provide health care services and room and board to persons with developmental disabilities. ICF/MR services are an optional MA service that the state has chosen to cover.
- Approximately 270 ICFs/MR in the state. Range in size from 4 to 64 beds (most have 15 or fewer beds).
- As of October 1, 2000, there were 2,827 ICF/MR beds.

January 25, 2001

House Research Dept./House Fiscal
Analysis Dept.

34

ICFs/MR Eligibility

- Eligible for MA
- Have mental retardation or a related condition
- Require a 24-hour plan of care
- Choose ICF/MR services

January 25, 2001

House Research Dept./House Fiscal
Analysis Dept.

35

ICFs/MR Services

The package of ICF/MR services includes:

- Training and habilitation
- Supported employment
- Room and board
- Transportation
- Related medical services

January 25, 2001

House Research Dept./House Fiscal
Analysis Dept.

36

ICFs/MR Reimbursement

- Prior to October 1, 2000, ICFs/MR were reimbursed under a prospective, cost-based system, using specific reimbursement categories and reimbursement limits.

January 25, 2001

House Research Dept./House Fiscal
Analysis Dept.

17

ICFs/MR Reimbursement (cont.)

- Since October 1, 2000, ICFs/MR have been reimbursed under a new reimbursement system. Under this system:
 - Reimbursement is based on a facility's prior operating rate, minus property costs. This rate is adjusted annually for inflation, within the limits of appropriations.
 - Property rate is based on the prior rate, subject to a floor.
 - Process to obtain rate adjustments.

January 25, 2001

House Research Dept./House Fiscal
Analysis Dept.

38

ICFs/MR Program Statistics

- Total cost: \$158.5 million in FY 2001
- Financing: state 50%/ federal 50% (est.)
- Average monthly recipients: 2,842
- Average monthly payment: \$4,649

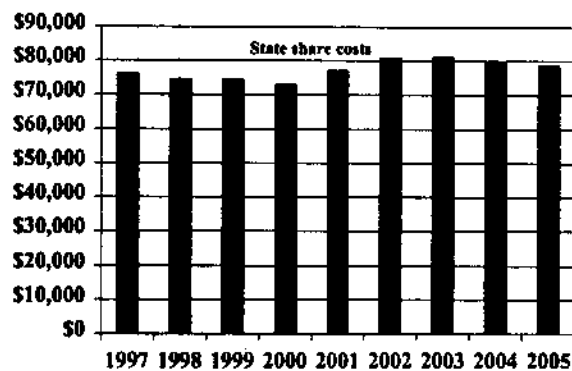
January 25, 2001

House Research Dept./House Fiscal
Analysis Dept.

39

ICFs/MR

(dollars in thousands)



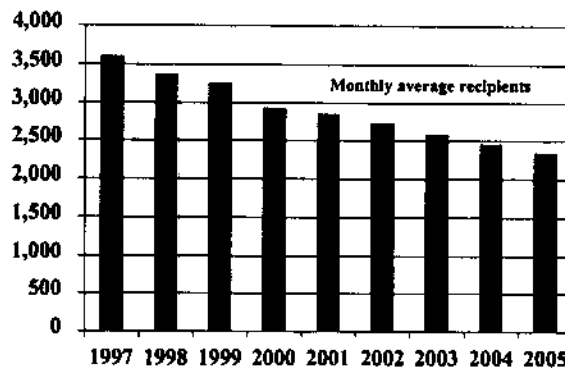
Source: November 2000 forecast, Department of Human Services

January 25, 2001

House Research Dept./House Fiscal
Analysis Dept.

40

ICFs/MR



Source: November 2000 forecast, Department of Human Services.

January 25, 2001

House Research Dept./House Fiscal
Analysis Dept

41