



Construction Program

RESEARCH CENTERS

UNIVERSITY—AFFILIATED
FACILITIES

COMMUNITY FACILITIES

U.S. DEPARTMENT OF HEALTH, EDUCATION, AND WELFARE
Washington, D.C. 20201

MENTAL

Construction Program

? RESEARCH CENTERS

? UNIVERSITY-AFFILIATED
FACILITIES

? COMMUNITY FACILITIES

*Secretary's Committee on
Mental Retardation*

U.S. DEPARTMENT OF
HEALTH, EDUCATION, AND WELFARE
Robert H. Finch, Secretary

Patricia Reilly Hitt, Assistant Secretary
for Community and Field Services

Washington, D.C. 20201

March, 1969

FOREWORD

Federal support for categorical construction programs is a relatively new principle. In fact, prior to 1963, no Federal legislation existed to support construction of facilities designed specifically for the mentally retarded.

Since the enactment in 1963 of the Mental Retardation Facilities and Mental Health Centers Construction Act (P.L. 88-164), three different but interrelated construction programs for the retarded have been initiated: Research Centers, University-Affiliated Facilities and Community Facilities. As of March 31, 1969, a total of 12 Research Centers, 18 University-Affiliated Facilities, and 242 Community Facilities had been approved and funded.

These construction programs were designed to provide assistance in three areas of concern: continuing research into the causes and means of prevention of mental retardation; inter-disciplinary training of professional personnel for research and service careers in both present and newly emerging programs; and establishment of a network of facilities where the retarded can obtain services in their own communities.

This publication reviews the current status of these three construction programs for the mentally retarded.

Special acknowledgement is given to Dr. Michael Begab, National Institute of Child Health and Human Development and Mr. Vivian Hylton and Mr. Ronald Almack, Division of Mental Retardation, Rehabilitation Services

A handwritten signature in dark ink, appearing to read "Patricia Reilly Hitt", followed by a vertical line and some additional scribbles.

(Mrs.) Patricia Reilly Hitt
Assistant Secretary for
Community and Field Services

Administration, for their contributions to this publication.

INTRODUCTION

The Report of the President's Panel on Mental Retardation in 1962 resulted in a breakthrough of real significance for mental retardation programs. This Report was a culmination of the efforts of a group of distinguished Americans who studied the problem of mental retardation and reported on their findings. The Report outlined a number of areas for action, and provided a blueprint for planning and implementive programs of comprehensive services to the retarded. The Report in large measure was responsible for the subsequent enactment of a number of Federal laws affecting the retarded, including authority for new construction programs.

Subsequent to issuance of the Report, a special message on mental retardation and mental health was sent to Congress in 1963. The message outlined areas of concern and suggested possible approaches. Three areas given special attention were research and prevention, manpower and community based services. In the same year Congress enacted the first Federal categorical construction programs for the mentally retarded: "The Mental Retardation Facilities and Mental Health Centers Construction Act of 1963" (P.L. 88-164).

Briefly, P.L. 88-164 authorized appropriation of \$329 million over a five-year period to provide: grants for construction of mental retardation facilities; grants for training professional personnel in the education of the handicapped and grants for conducting research relating to the education of the handicapped.

Title I, Part A, of P.L. 88-164, authorized project grants for the construction of public or nonprofit centers for research that would develop new knowledge for preventing and combatting mental retardation.

Title I, Part B, authorized project grants to assist in the construction of public or nonprofit clinical facilities for the mentally retarded, associated with a college or university, which: (1) provide, as nearly as practicable, a full range of inpatient and outpatient services; (2) aid in demonstrating provision of specialized services for diagnosis, treatment, training, or care; and (3) aid in the clinical training of physicians and other specialized personnel needed for research, diagnosis, treatment, training or care.

Title I, Part C, authorized Federal grants to States to assist in the construction of specially designed public and nonprofit community facilities to provide diagnosis, treatment, education, training, custodial (persona} care, and sheltered workshops for the retarded.

The Mental Retardation Amendments of 1967 (P.L. 90-170) provided for a new grant program to pay a portion of the costs for compensation of professional and technical personnel in community facilities for the mentally retarded.

TABLE OF CONTENTS

	Page
FOREWORD	iii
INTRODUCTION	v
TABLE OF CONTENTS	vii
RESEARCH CENTERS	1.
UNIVERSITY-AFFILIATED FACILITIES . . .	10.
COMMUNITY FACILITIES	39.

MENTAL RETARDATION RESEARCH CENTERS

Research and research training in mental retardation and related aspects of human development present unique demands in terms of facilities and resources. Recognition of these needs led, in 1963, to legislation authorizing construction grants for facilities in which biological, medical, social, and behavioral research relating to human development could be conducted to assist in finding the causes and means of prevention of mental retardation and, for finding means of ameliorating its effects.

Acceptance of applications for construction grant awards under the Act authorizing the Mental Retardation Research Centers closed on July 1, 1967. During the authorized four years of the Mental Retardation Research Center Construction Grant Award Program a total of twelve centers were awarded to outstanding scientific institutions. During its construction phase this program was jointly administered by the Division of Research Facilities and Resources and The National Institute of Child Health and Human Development (NICHD). Continuing responsibility for the research program in the centers is carried on by NICHD.

The facilities constructed through the Mental Retardation Research Center Program will provide research facilities in particular environments where a cohesive program of research and research training can be accomplished. Most of the centers are large complex facilities in settings where a broad spectrum of research on mental retardation can best be carried out. A small number of specialized centers which have a concentrated scientific focus on a particular aspect of mental retardation are also supported by the program.

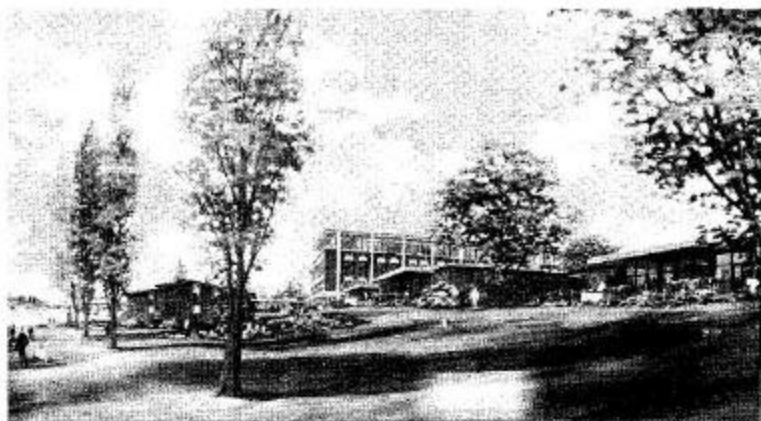
UNIVERSITY OF WASHINGTON, SEATTLE, WASHINGTON

The Mental Retardation Program at the University of Washington is a multidisciplinary university-wide endeavor involving the Medical School, Dental School, School of Nursing, School of Social Work, the College of Education and the Departments of Psychology and Sociology.

Research in the biological sciences will include developmental biology, perinatal biology and the neurological sciences. Behavioral studies will include individual behavior under carefully controlled environmental conditions, family and peer group interactions, and applied research on testing of educational and treatment techniques. The facility will also be utilized for research on new methods and materials for the retarded.

This Center will feature outpatient and residential facilities for comprehensive clinical studies of retarded children and will provide research training programs to prepare physicians and professionals in the health related disciplines for research in mental retardation and related aspects of human development.

Total cost of project:	\$8,290,970
Federal Share: Date of	6,250,616
Award: Estimated	October, 1964
completion date:	1969



University of Washington, Seattle, Mental Retardation and Child Development Center

ALBERT EINSTEIN COLLEGE OF MEDICINE, YESHIVA UNIVERSITY, NEW YORK, NEW YORK

This program will be a joint effort of the Departments of Obstetrics and Gynecology, Pediatrics and Psychiatry. It will concern itself with research problems involving the total human organism, the family and the community with special emphasis on factors leading to mental retardation.

Studies in developmental biology will be conducted at all levels, including molecular and enzymatic studies of the organ systems. Research will also be undertaken in the behavioral and social sciences and ecology.

The College of Medicine has working arrangements with the Edenwald School, a residential treatment center for retarded children, and with the New York City Hospital which will enable them to translate new research findings into patient care.

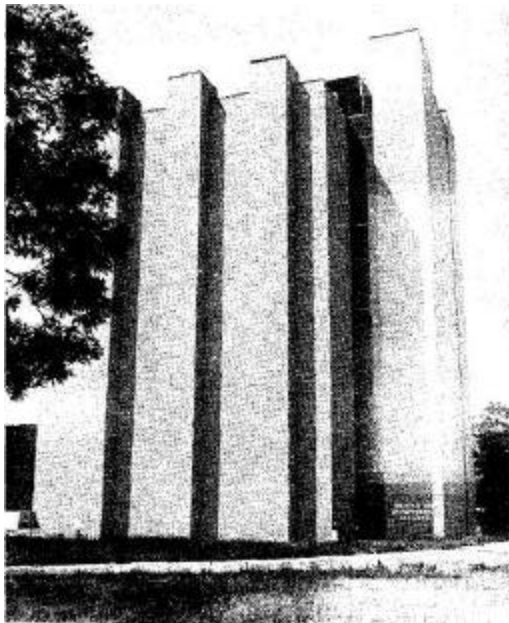
Total cost of project:	\$5,124,815
Federal Share: Date of	3,304,000
Award: Estimated	October, 1964
completion date:	1969

CHILDREN'S HOSPITAL, CINCINNATI, OHIO

This Research Center will focus on biomedical research. In addition to its pediatric researches the program will include teratology and genetics, physiology, biochemistry, and clinical research. It will stress basic research and research training, and the development of diagnostic and treatment techniques.

Areas of study will include malformations resulting from altered environment during the developmental period and genetic abnormalities, inborn metabolic errors, and various studies of the effects of drugs and infection on the fetus and mother.

Total cost of project:	\$3,011,210
Federal Share: Date of	1,724,000
Award: Completion	July, 1965
date:	July, 1967



Children's Hospital, Cincinnati,
Institute for Developmental Research

WALTER E.. FERNALD STATE SCHOOL, WALTHAM, MASSACHUSETTS

This Center is located on the grounds of an institution for the retarded and will place heavy emphasis on the retarded person as the object of study. Interchange with investigators in other fields will be encouraged, and research will focus on prevention and amelioration. Among the disciplines included in this research program are neurology, psychiatry, pediatrics, epidemiology, experimental psychology, cytogenetics and education. An unusual feature of this project is the close cooperation between the Fernald School, Massachusetts General Hospital, and the Harvard Medical School.

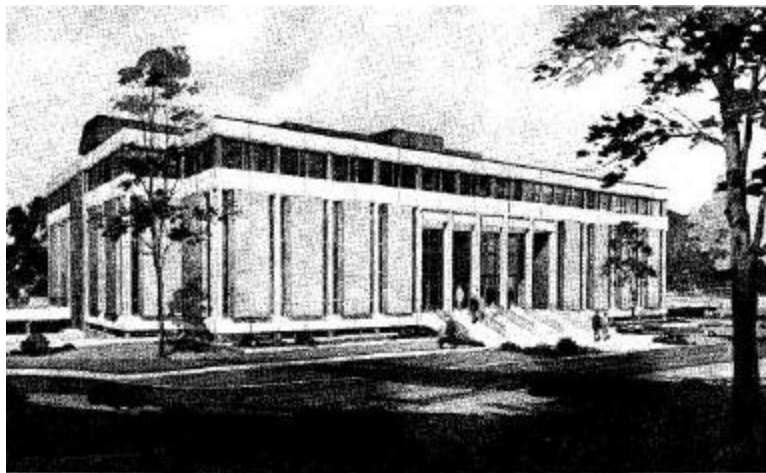
Total cost of project:	\$1,790,000
Federal Share:	827,000
Date of Award:	May 1965
Estimated completion date:	1969

GEORGE PEABODY COLLEGE FOR TEACHERS, NASHVILLE, TENNESSEE

This College has a long and productive history of research and training in the field of mental retardation but in a circumscribed area of the behavioral sciences. The new Center will make possible the expansion of interdisciplinary research efforts and research training for a wider range of behavioral scientists and for collaborative research with biomedical disciplines at Vanderbilt University.

In the newly created Division of Human Development, the program will primarily be directed at the educational, psychological and sociological aspects of mental retardation with strong emphasis on cultural deprivation. The uniqueness of this research program lies in its relatively narrow but powerful thrust on these vital dimensions of the problem.

Total cost of project:	\$3,543,547
Federal Share:	2,492,900
Date of Award:	May, 1965
Completion date:	November, 1967



George Peabody College for Teachers,
Nashville, Tennessee

UNIVERSITY OF CALIFORNIA, LOS ANGELES, CALIFORNIA

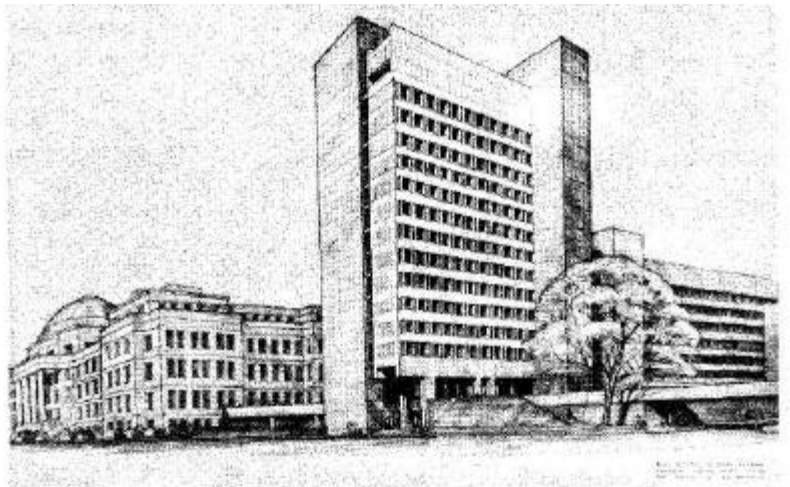
The main focus of the research program in this Center will involve a combined biological and behavioral approach to the problem of mental retardation. It envisions cooperative studies among the Departments of Psychiatry, Neurology, Pediatrics, Biochemistry and other Divisions within the Medical School, as well as the Departments of Sociology and Psychiatry. Collaborative studies of a basic and clinical nature related to mental retardation will be undertaken.

The University has also received approval for the construction of a clinical facility for training and demonstration under Part B, Title I of the P. L. 88-164. These activities will be closely coordinated with those of the research center.

Total cost of project:	\$2,588,970
Federal Share:	1,710,000
Date of Award:	January, 1966
Estimated completion date:	1969

CHILDREN'S HOSPITAL MEDICAL CENTER, BOSTON, MASSACHUSETTS

This Center is closely affiliated with the Harvard Medical School and proposes an interdisciplinary research program directed toward the understanding, prevention and amelioration of the handicapped and the mentally retarded. The research team will include representation from experimental neurological sciences, behavioral sciences, genetics, metabolism and clinical research.



Children's Hospital Medical Center,
Boston, Massachusetts

This action is the largest single commitment in the Institution's history to research in a given field.

Total cost of project:	\$4,140,337
Federal Share:	2,470,000
Date of Award:	January, 1966
Estimated completion date:	1970

UNIVERSITY OF KANSAS, LAWRENCE, KANSAS

The University of Kansas has a unique plan for the location of three research and research training units at the Kansas Medical Center, the main campus of the University at Lawrence, and the Parsons State Hospital and Training Center, an institution for the retarded.

The long-range multidisciplinary research program is broadly conceived and focuses on biomedical and behavioral research relevant to mental retardation. Each of the three settings will emphasize a specific area of research. Studies at the Medical Center will include reproductive physiology, biochemistry, neurophysiology and fetal and neonatal pathophysiology. Studies on learning, language, and social behavior will also be conducted. At the Lawrence campus, research will feature residential and preschool studies of behavior, and the processes of socialization, communication, and learning. The program at Parsons will stress research in training of children with deficits in language, socialization and adaptive behavior, in academic attainment and vocational skills.

Total cost of project:	\$2,921,978
Federal Share:	2,150,000
Date of Award:	September, 1965
Estimated completion date:	1969

UNIVERSITY OF COLORADO, DENVER, COLORADO

Strong research programs in neurophysiology, neuropharmacology, behavioral sciences, developmental pediatrics, cytogenetics, nutrition, developmental and lipid biochemistry, and neurochemistry form the basic science research core of the Colorado center.

The Wheatridge State Home and Training School, the Colorado mental retardation training facility, and State and community health resources will provide additional resources for research through a coordinated program. Special studies in family and community health will be possible through these extra resources. Epidemiological and population genetic studies will be conducted among the special populations resident in Colorado and the Southwest

Total cost of project:	\$442,647
Federal Share:	296,100
Date of Award:	December, 1966
Completion date:	1968

UNIVERSITY OF NORTH CAROLINA, CHAPEL HILL, NORTH CAROLINA.

The University of North Carolina Child Development and Mental Retardation Research Center plans a broad program of research involving medical, psychological, educational and social sciences.

Two separate but administratively unified facilities will be constructed. The medical research facility will house a comprehensive research program including research in the clinical and basic sciences of medicine and health related disciplines.

The psycho-educational facility will consist of a unique arrangement of educational and care facilities with supporting research laboratories. The central research theme will be long-term, longitudinal studies of retarded children and children at risk of becoming retarded. Beginning in infancy or early age and continuing through the elementary school years of the children will be provided with a carefully engineered program and environment designed to enhance their intellectual, social and emotional development. Medical research here will include studies of the impact of optimal health care and the consequences of infectious diseases on development.

Total cost of project:	\$3,423,241
Federal Share:	2,439,400
Date of Award:	September, 1966
Estimated completion date:	1970

UNIVERSITY OF CHICAGO, CHICAGO, ILLINOIS

An award for moveable research equipment was made to the University of Chicago to assist in equipping their Joseph P. Kennedy, Jr. Mental Retardation Research Center located in Wyler Children's Hospital. The research center is contiguous with the Chicago Lying-in-Hospital which provides a resource for studies of prematurity and obstetrical conditions leading to retarded development.

Research in the center will focus on cytogenetics and population genetics, enzyme development, neurological and hematological investigations, biochemistry, virology, respiratory physiology, and developmental studies.

Moveable research equipment award only.

Amount of Award:	\$59,300
Date of Award:	September, 1966
Completion date:	March 1967

UNIVERSITY OF WISCONSIN CENTER, MADISON, WISCONSIN

The University of Wisconsin Center plans a broad, comprehensive research program involving the biomedical, behavioral, social and educational sciences. The Biomedical Sciences Unit will provide for research in neurophysiology, neurometabolism and nutrition, and neuroendocrinology and reproduction. Programs proposed for the Behavioral and Social Sciences Unit will focus on genetic and environmental factors in infant development; basic behavioral developmental processes; learning in educational situations; communication processes; and, family and social factors. The Central Wisconsin Colony will be closely integrated into the research and research training activities to assure coverage of the problems of the institutionalized retardate. A University-Affiliated Facility and program under common administration will provide a close relationship of center activities to clinical training.

Total cost of project:

Federal Share: \$2,263,000

Date of Award: January 26, 1967

Estimated completion date: 1971

APPROPRIATIONS AND APPROVED APPLICATIONS FOR
MENTAL RETARDATION RESEARCH CENTERS
December 31, 1968

<u>FISCAL YEAR</u>	<u>APPROPRIATION</u>	<u>APPLICATIONS APPROVED</u>	<u>FEDERAL SHARE</u>
TOTAL.	\$26,000,000	12	\$25,986,316

Institutions	Total Cost	Federal Share	Estimated and/or <u>Completion Date</u>
University of Washington, Seattle, Washington	\$8,290,970	\$6,250,616	1969
Albert Einstein College of Medicine, Yeshiva University- New York, New York	5,124,815	3,304,000	1969
Children's Hospital Cincinnati, Ohio	3,011,210	1,724,000	July 1967
Walter E. Fernald State School, Waltham, Massachusetts	1,790,000	827,000	1969
George Peabody College for Teachers, Nashville, Tennessee	3,543,547	2,492,900	Nov. 1967
University of California Los Angeles, California	2,588,970	1,710,000	1969
Children's Hospital Medical Center, Boston, Massachusetts	4,140,337	2,470,000	1970
University of Kansas, Lawrence, Kansas	2,921,978	2,150,000	1969
University of Colorado, Denver, Colorado	442,647	296,100	April 1968
University of North Carolina, Chapel Hill, North Carolina	3,423,241	2,439,400	1970
University of Chicago, Chicago, Illinois	(Moveable Research Equipment Award)	59,300	1967
University of Wisconsin, Madison, Wisconsin	<u>7,000,000*</u>	<u>2,263,000</u>	1971
TOTAL	\$39,647,715	\$25,986,316	

* - Includes Estimated Cost of Both Research Center and
University-Affiliated Facility.

UNIVERSITY-AFFILIATED FACILITIES CONSTRUCTION PROGRAM
FOR THE MENTALLY RETARDED

The program of Federal assistance for the construction of University-Affiliated Facilities for the mentally retarded was authorized under P.L. 88-164, "The Mental Retardation Act of 1963", and extended until 1970 under the Mental Retardation Amendments of 1967 (P.L. 90-170). This program provides grants for the construction of University-Affiliated Facilities with programs for the mentally retarded and persons with related neurological handicapping conditions. Eighteen university-affiliated facilities have been approved for funding.

The primary purpose of the University-Affiliated Facilities Construction program is to provide facilities for the clinical training of professional and technical personnel essential for diagnostic services and the care, education, training, and rehabilitation of the mentally retarded individual and his family. Each facility is encouraged to conduct a comprehensive interdisciplinary training program integrating and coordinating the full range of professional and technical personnel concerned with mental retardation so that each discipline may be fully familiar with its own contributions and those of related disciplines to the total effort in the field of mental retardation. A full range of individual and group services and demonstration of new techniques and concepts in services for the mentally retarded are considered important elements in University-Affiliated Facility programs, and research incidental or related to activities conducted within the facility is authorized.

This construction program is administered by the Division of Mental Retardation, Rehabilitation Services Administration, Social and Rehabilitation Service, U. S. Department of Health, Education, and Welfare. The following descriptions review the types of facilities and programs which have been supported with these funds and the current status of their construction.

1. UNIVERSITY OF ALABAMA MEDICAL CENTER AT
BIRMINGHAM AND TUSCALOOSA, ALABAMA

The University of Alabama program is based at two locations, one in Birmingham and the other at Tuscaloosa.

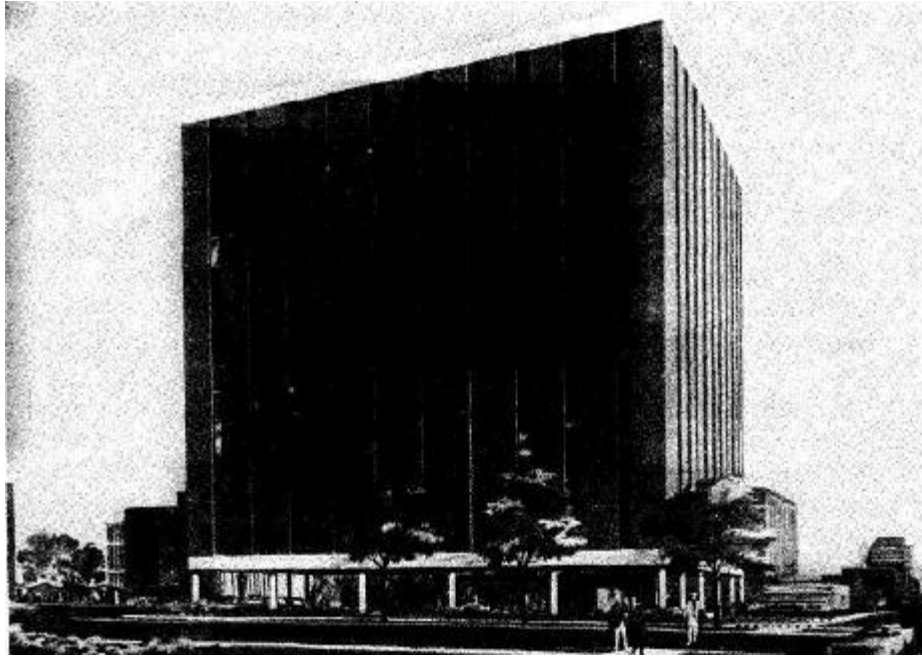
The Medical School at Birmingham presently maintains a variety of services for the mentally retarded which serve as a base for training and will be expanded to increase diagnostic and evaluation capability and capacity coupled with an intensive program of treatment and professional training in various disciplines.

The Tuscaloosa facility presently provides specialized graduate training in a variety of disciplines including clinical psychology, experimental psychology, social work, special education, and communication disorders. Interdisciplinary clinical, research and educational programs were developed as a part of the Center program.

The Partlow State Hospital, located adjacent to the Tuscaloosa campus, with an inpatient population of 2,000, will utilize to maximum advantage the behavioral sciences faculty at the main University. Interdisciplinary training utilizing joint appointments in the University and the facility and the dual relationship, with the University and Partlow School, will result in the application of knowledge of recent advances in research, training and service for the mentally retarded.

Training programs are coordinated through an advisory council consisting of the Deans of Medicine, Dentistry, Arts and Sciences, Education and the Graduate School. An interdisciplinary advisory committee consisting of the Chairman of the subgroups in the various schools and colleges of the University supervises training. The council, the committee and the Directors of the Tuscaloosa and Birmingham facilities are under the administrative direction of the Vice President of the University for Medical Affairs.

Total Cost: \$2,907,326
Federal Share: 2,180,494
Date of Award: November 1965
Completion Date: Tuscaloosa: October 1968
Birmingham: January 1969



University of Alabama Medical Center., Birmingham, Alabama

2. UNIVERSITY OF CALIFORNIA, NEUROPSYCHIATRIC INSTITUTE,
LOS ANGELES, CALIFORNIA

The Mental Retardation University-Affiliated Facility of the University of California Neuropsychiatric Institute is housed in a new four-story addition to the existing UCLA Medical School Complex.

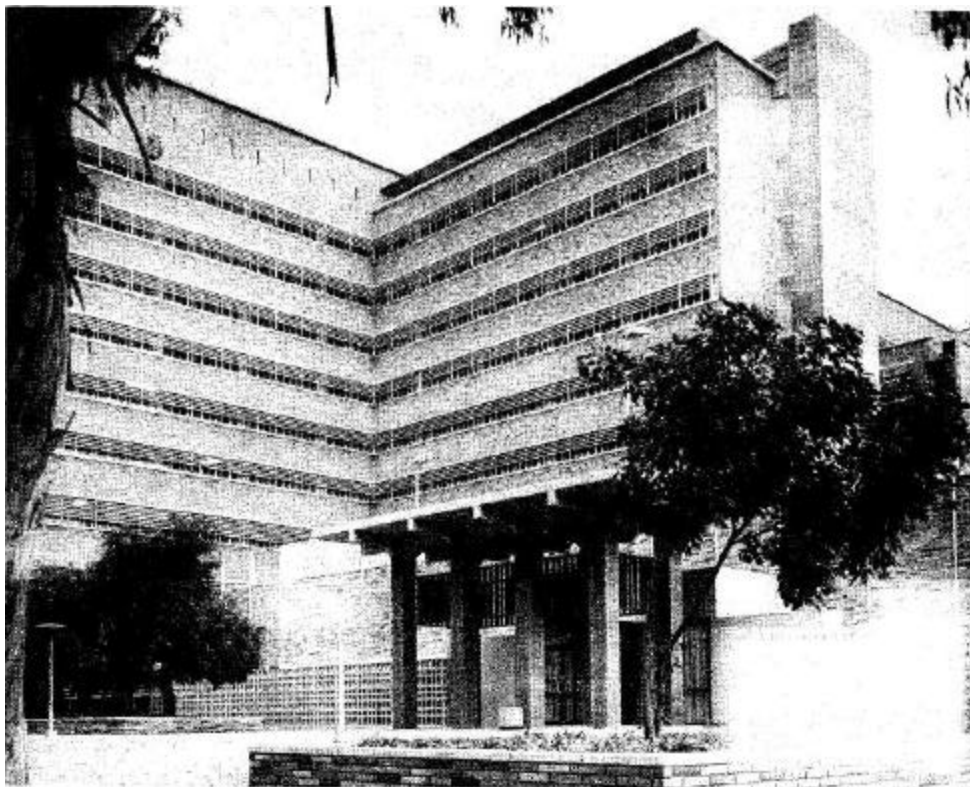
The Mental Retardation Unit provides three 20-bed wards, one for young severely retarded children, one for ambulatory retarded children, and one for older children with varying degrees of retardation. The fourth floor houses the school facilities.

All children coming to the UCLA Medical Center, both inpatients and outpatients, are screened in the general pediatric clinic, and mentally retarded patients are referred to the Neuropsychiatric Institute for extensive diagnostic studies and evaluation. The outpatient department functions as a part of the total program at the present time. The major effort in mental retardation has been based at the Pacific State Hospital at Pomona, and the center will provide a facility to bring widely distributed services and training sites together.

The inpatient and outpatient evaluation and treatment program is utilized to support the interdisciplinary training effort that is being undertaken. Students in fields such as psychiatry, pediatrics, other branches of medicine, psychology, social work, special education and nursing are receiving training. All students have an opportunity for close interaction with extensive research programs carried out in the Center for Research in Mental Retardation and Related Aspects of Human Development funded under Title I, Part A, P.L. 88-164.

The State Department of Mental Hygiene will provide basic research and training support for the center. The Schools of Education and Social Work of UCLA are associated with the Pacific State Hospital in coordinated research efforts. The interdisciplinary training program is broadly based within the center and is allied with the interdisciplinary research training program supported by the State and the U.S. Public Health Service.

Total Cost:	\$6,330,000
Federal Share:	2,638,335
Date of Award:	July 1965
Completion Date:	December 1968



University of California, Neuropsychiatric Institute
Los Angeles, California

3. JOHN F. KENNEDY CHILD DEVELOPMENT CENTER AND B. F. STOLINSKY RESEARCH LABORATORIES, UNIVERSITY OF COLORADO, DENVER, COLORADO

The Center is adjacent to an existing day care center located on the main campus of the Medical School. It is a three story building providing space for pediatricians, nurses, clinical psychologists, social workers, nurses, nutritionists, dentists, audiologists and speech therapy personnel in training. A special feature of the Center is a large indoor play area and school room where children may be observed.

Students from the Schools of Social Work and Psychology of the Denver University will be assigned to the Center. Students from the Departments of Physical Medicine and Special Education of Colorado State University will also be provided with training opportunities in an interdisciplinary teaching environment

The importance of the Center in the overall State effort is exemplified by the Center's designation as a Regional Center in Mental Retardation. Training programs are coordinated through the Director of the Center who has a Medical School appointment. Interdisciplinary research and clinical efforts in the Stolinsky Laboratories associated with the Center are being conducted to discover the causes, prevention and treatment of developmental deviations and their attendant emotional disorders.

Total Cost:	\$602,884
Federal Share:	369,000
Date of Award:	January 1966
Completion Date:	July 1968



John F. Kennedy Child Development Center and B. F. Stolinsky Research Laboratories, University of Colorado, Denver, Colorado

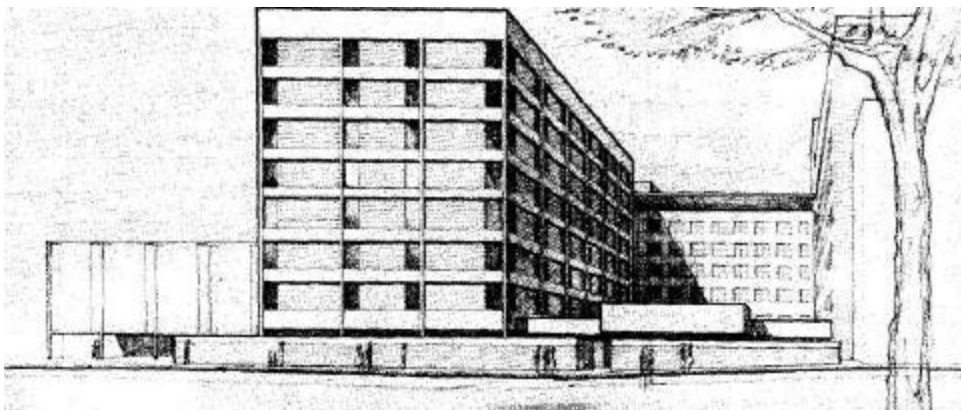
4. GEORGETOWN UNIVERSITY, WASHINGTON, D. C.

The University-Affiliated Center, which is an integral part of the Medical School complex, will be directed toward meeting the needs of the training effort related to: (a) more complete diagnostic evaluations (b) longitudinal management and rehabilitation of the mentally retarded (c) training of medical students, physicians and nurses. The social behavioral components in training involve other local universities, e.g., psychology students come from Catholic University, special education students from George Washington University, and social work students from Howard University under a consortium agreement to assure interdisciplinary training in which training content is determined by the affiliated universities. A small preschool nursery is staffed by the St. Johns Developmental School, a community facility. The District of Columbia, Virginia, and Maryland Departments of Vocational Rehabilitation will provide patient prevocation evaluations and will be closely allied with the Center.

Emphasis in the intramural phase of the program will be on early diagnosis and comprehensive programming for the preschool child. Diagnostic classrooms will be an essential resource for the program, with a special interest in individuals having both auditory and visual handicaps. Training in inpatient care will be provided in a 29-bed unit.

The Center will offer training in the fields of social work, special education, sociology, theology, and law, in addition to the biomedical professions, in an interdisciplinary approach to the problems of mental retardation. An extramural program directed at existing community resources of high quality will allow training programs and services to be integrated into the comprehensive needs of the mentally retarded in the metropolitan Washington area.

Total Cost:	\$2,000,000
Federal Share:	1,500,000
Date of Award:	February 1965
Estimated Completion Date:	October 1969



Georgetown University, Washington, D. C.

5. UNIVERSITY OF MIAMI, MIAMI, FLORIDA

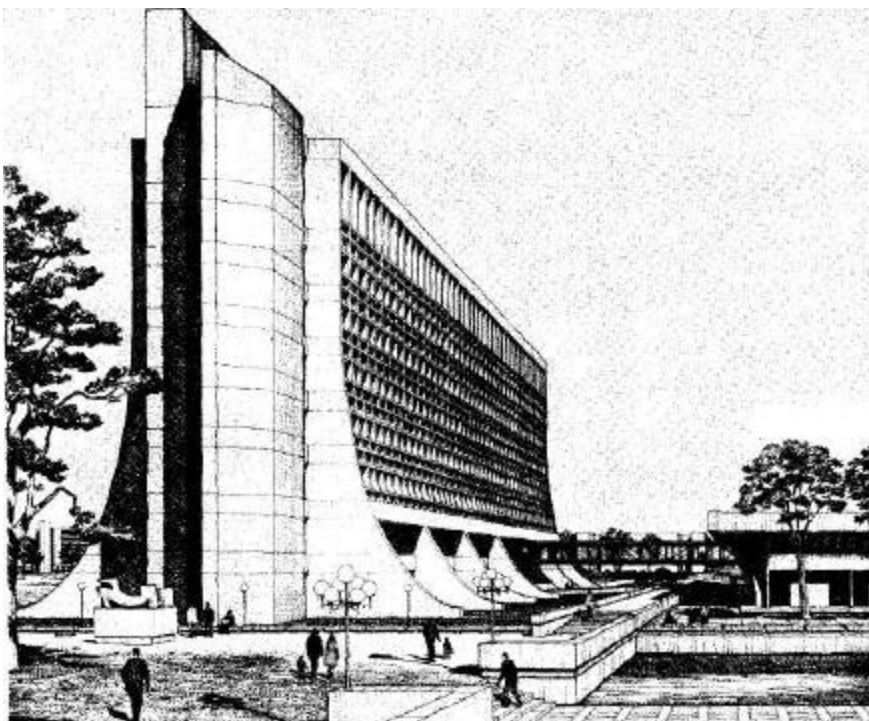
The Mailman Child Development Center will be located on the campus of the School of Medicine of the University of Miami, within the immediate vicinity of the Jackson Memorial Hospital and the National Children's Cardiac Hospital, which are teaching hospitals for the Medical School.

The Center provides an opportunity to make training in mental retardation a part of the learning experience of all medical, nursing, psychology, social work, special education, speech and law students. Students from the University of Miami, Florida State University, Barry College and the University of Florida will participate in the training programs. The programs will be devoted to seeking the causes and means of prevention as well as the methods of ameliorating psycho-social and medical effects of mental retardation and other handicapping conditions.

Training programs are under the supervision of a Director appointed by the President of the Main University. The Director serves as chairman of the interdisciplinary training committee whose members are selected by the Dean of the appropriate schools or colleges in the University.

Patients are admitted by referral from community and social agencies as well as private physicians. They will range in age from infancy to the older adults, and all levels of retardation will be seen and evaluated. The bulk will come from Dade and Broward Counties; however, there will be no geographical restrictions on admission.

Total Cost:	\$4,872,575
Federal Share:	3,054,432
Date of Award:	November 1966
Estimated Completion Date:	December 1970



University of Miami, Miami, Florida

6. GEORGIA RETARDATION CENTER, GEORGIA DEPARTMENT OF PUBLIC HEALTH,
ATLANTA AND ATHENS, GEORGIA

A facility located in Atlanta and a satellite facility to be built in Athens on the University of Georgia campus will comprise the Center.

Atlanta

The University Affiliated Center for the mentally retarded will be a part of a large State residential Mental Retardation Center in Atlanta. This comprehensive residential facility will serve approximately 1,000 resident retardates, and provide day care services for an additional 500 retardates. The following colleges and universities will be affiliated in the training programs of the Atlanta facility in the disciplines as indicated: 1. Atlanta University - special education and social work; 2. Interdenominational Theological Center - religious therapy; 3. University of Georgia - speech and hearing, recreation for the handicapped, special education, child development, guidance and counseling, vocational rehabilitation, psychology, and sociology; and 4. Emory University - pediatrics, psychiatry, physical medicine, physical therapy, occupational therapy, special education, nursing, psychology, sociology, religious therapy, and speech and hearing. All of the affiliated training programs will be at the graduate level, and the facilities will be made available insofar as practicable for undergraduate instruction.

Training programs are conducted through an an Advisory Board for Training chaired by the Assistant to the Superintendent for the Georgia Retardation Center with members representing each university or college affiliated with the Center.

Athens

The Athens Facility at the University of Georgia will accommodate 40 short term residents and 40 retardates in the day care program. The Facility well serve as a laboratory to teach diagnostic and therapeutic measures for speech pathologists in language, speech, and hearing problems of the mentally retarded. The University of Georgia, Department of Psychology presently conducts a psychological clinic as part of the program for training of clinical psychologists.

Total Cost:	Atlanta \$17,387,852
	Athens 2,137,248
Federal Share:	Atlanta \$1,206,450
	Athens 1,887,713
Date of Award:	Atlanta June 1969
	Athens June 1969
Estimated Completion Date:	Atlanta June 1969
	Athens December 1969



Georgia Retardation Center, Dekalb, Georgia

7. INDIANA UNIVERSITY MEDICAL CENTER
INDIANAPOLIS AND BLOOMINGTON, INDIANA

This Center for Mental Retardation consists of two facilities, one at the Indiana University Medical Center, Indianapolis, and the other at the Indiana University Campus in Bloomington, Indiana.

Primary training responsibility for student trainees will be under the direction of the appropriate departments. The program will be administered by two working committees and a steering committee under the direction of the Vice President for Research and Advanced Study at Indiana University. These working committees are the Professional Advisory Committee, Riley Child Development Center, and the Professional Advisory Committee.

Riley Hospital Child Development Facility, Indianapolis

This Facility will become a part of the Riley Hospital for Children, which is the only hospital in the State devoted entirely to the care of children. It has served as a referral Center for all difficult cases of pediatric diagnosis and treatment, and over 50% of the children are referred from throughout the State to the hospital. At least 40% of the children seen in the outpatient clinic are diagnosed as mentally retarded. Family

interactions that are critical to mentally retarded youngsters have long been explored.

The physical plan of the Facility takes into account the latest trends in patient care, particularly ambulatory services. The consultative diagnostic and treatment clinic serves as a comprehensive consultation service to physicians within the State and also serves as a major educational activity at the Medical School. Pediatric residents are assigned to the Facility for three-month periods, and senior medical students are assigned to the clinic as part of a six-week pediatric training program. Students from the School of Nursing and the allied health professions, i.e., social work, psychology, audiology, occupational therapy, and speech therapy, attend sessions within the Facility.

As each patient is diagnosed and evaluated, an effort is made to develop continuity care and the designation made of specialty clinics which will be beneficial to the retardate after his return to the referring physician or his home.

Indiana University Developmental Training Facility, Bloomington

This Facility is located adjacent to the laboratory school.

The Bloomington Facility will house 48 children in eight "home units" arranged as "row houses." Each unit will be autonomous in that it will have the normal features found in a home and an attached apartment for cottage parents who will provide a home atmosphere and individuality for each unit.

Coodination of training programs between the Riley Hospital Child Development Facility and the Indiana University Developmental Training Facility will be established. The Bloomington Facility will profit from consultation and guidance received from the Indianapolis Facility in the areas of pediatrics, neurology, psychiatry, nursing, and social work. Likewise, the Indiana University at Bloomington will provide consultation to the Riley Facility in the behavioral sciences, speech and hearing, special education, counseling and recreation.

Total Cost:	\$4,277,635
Federal Share:	3,157,231
Date of Award:	December 1965
Completion Dates:	Riley Hospital: January 1970 Bloomington: August 1969



Indiana University Developmental Training Facility, Bloomington, Indiana

8. UNIVERSITY OF KANSAS AND PARSONS STATE HOSPITAL: LAWRENCE,
KANSAS CITY, AND PARSONS, KANSAS

The University-Affiliated Facility to be constructed in Kansas will consist of three buildings - one to be located at the University of Kansas at Lawrence, one at the Kansas University Medical Center at Kansas City, and one at the Parsons State Hospital. These Facilities will be adjacent or additive to the three buildings comprising the Kansas Center for Research in Mental Retardation and Human Development currently under construction. The multiple locations of the Kansas combined Center facilities make possible the utilization of varied research and clinical training resources. The three locations allow for the exploitation of resources of: (1) the academic community with its faculty and student population; (2) a modern medical center located in the heart of a metropolitan area; (3) a progressive residential construction project. Construction funds for the Kansas Center for Research in Mental Retardation came from Title I, Part A, P.L. 88-164. The combined Center in Mental Retardation will be coordinated by and administratively responsible to the Bureau of Child Research of the University of Kansas. Since 1957, the Parsons State Hospital, the Kansas University Medical Center, and the Bureau of Child Research have been engaged in behavioral and biological research and interdisciplinary training on a cooperative basis. The new construction will make possible the expansion and long-term projection of these activities.

The Medical Center serves the State of Kansas and adjoining areas as a major referral center for individuals with all types of behavioral and diagnostic problems. The University-Affiliated Facility will provide

service and training programs on each campus to improve comprehensive evaluation for patients. In addition both patients and their families will have access to a comprehensive longitudinal care program centrally directed.

Training programs are conducted in an interdisciplinary environment in pediatrics, special education, psychiatry, nursing, speech and hearing, psychology, dietetics and nutrition, and social service.

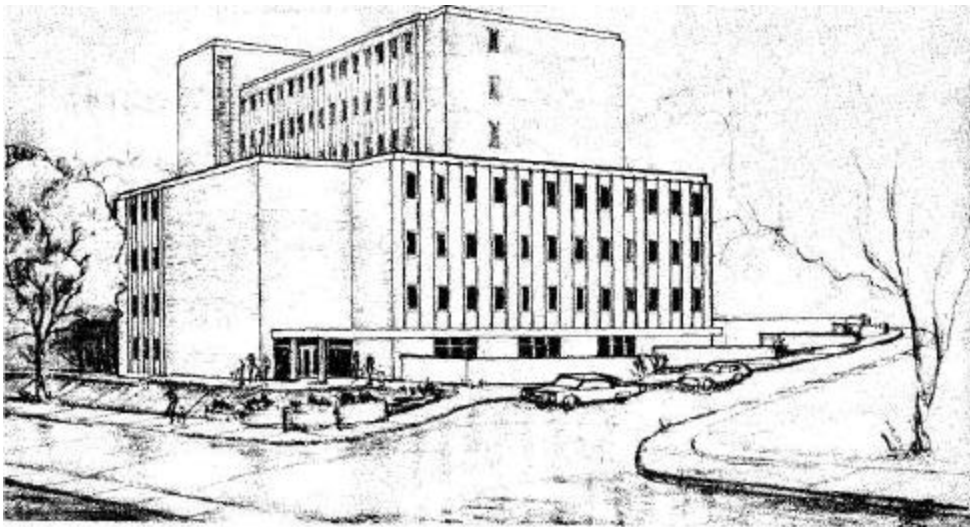
The Lawrence Facility will draw upon all of the resources of the University and will include a large number of trainees which will serve as a primary resource for recruitment and for pre-professional training. The staff of the Lawrence Facility will share responsibilities at the other two settings in the training of disciplines mentioned above, and an emphasis on developmental factors will be stressed in the following areas: parent counselling, behavioral training, the importance of community and environment, social and educational skills, and learning processes.

Parsons State Hospital and Training School

The Facility at the Parsons State Hospital and Training School will consist of a medical evaluation treatment section, a behavioral and evaluation section, and a section for audio-visual production. The plan for training clinical specialists at both Parsons and Kansas City will enable the training coordinators to draw upon resources of both the Research Center and the University-Affiliated Facility.

An administrative and coordinated structure has been organized in such a way that the levels of training responsibility are specified. A training director at each Facility will be responsible to the Center Director, stationed on the Lawrence Campus. The training staff will stress the importance of interdisciplinary training and the need for proper utilization of inter-campus resources.

Total Cost:	\$3,860,000
Federal Share:	2,729,400
Date of Award:	April 1969
Estimated Completion Date:	December 1970



University of Kansas University-Affiliated Facility

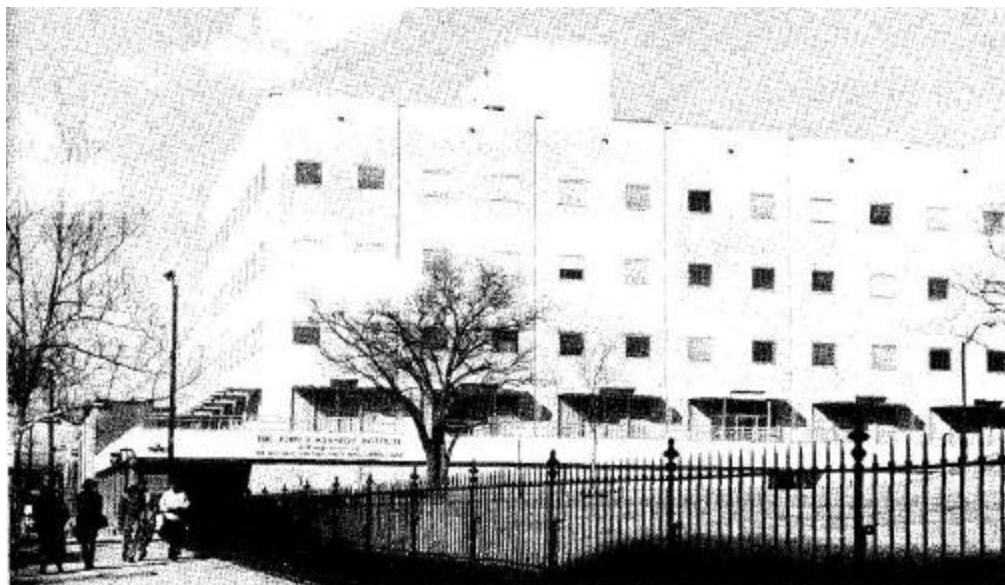
9. THE JOHN F. KENNEDY INSTITUTE (CHILDREN'S REHABILITATION INSTITUTE)
BALTIMORE, MARYLAND

The Children's Rehabilitation Institute is affiliated with the Johns Hopkins University Medical School and faculty recognition and status has been given to the Institute staff. The Institute is placing major emphasis on the following 3 program areas of greatest concern: (a) recruitment of high-caliber students and personnel from all disciplines to the field of mental retardation, (b) providing broader training and concepts for all Johns Hopkins medical, nursing and professional personnel who come in contact with the retarded and (c) helping to foster interdisciplinary understanding of the problem of mental retardation in the medical school, university, and the community.

The program within the Facility stresses the importance of the habilitation of the mentally and physically handicapped child. Special emphasis is placed on the treatment of both the child -and family by flexible use of inpatient and outpatient services with the primary aim of returning the patient to the community as a functioning member of society. The Institute makes full use of the multidisciplinary clinic approach by providing a full range of diagnostic, evaluation and therapeutic services. Such services help develop a better understanding of the problem and make possible better long-term management of the child by the family.

An experimental school with a flexible curriculum and program for students ranging in age from five through twenty-one years is included in the institute. The school program includes prevocational training, sheltered workshop and work study programs. Residential patient care as well as training for parents is being provided in two residential units where parents are encouraged to live for a few days in order to obtain instruction as to the special needs and best methods of handling their particular child.

Total Cost:	\$3,147,000
Federal Share:	2,360,250
Date of Award:	February 1965
Completion Date:	November 1967



The John F. Kennedy Institute (Children's Rehabilitation Institute)
Baltimore, Maryland

10. THE CHILDREN'S HOSPITAL MEDICAL CENTER, BOSTON, MASSACHUSETTS

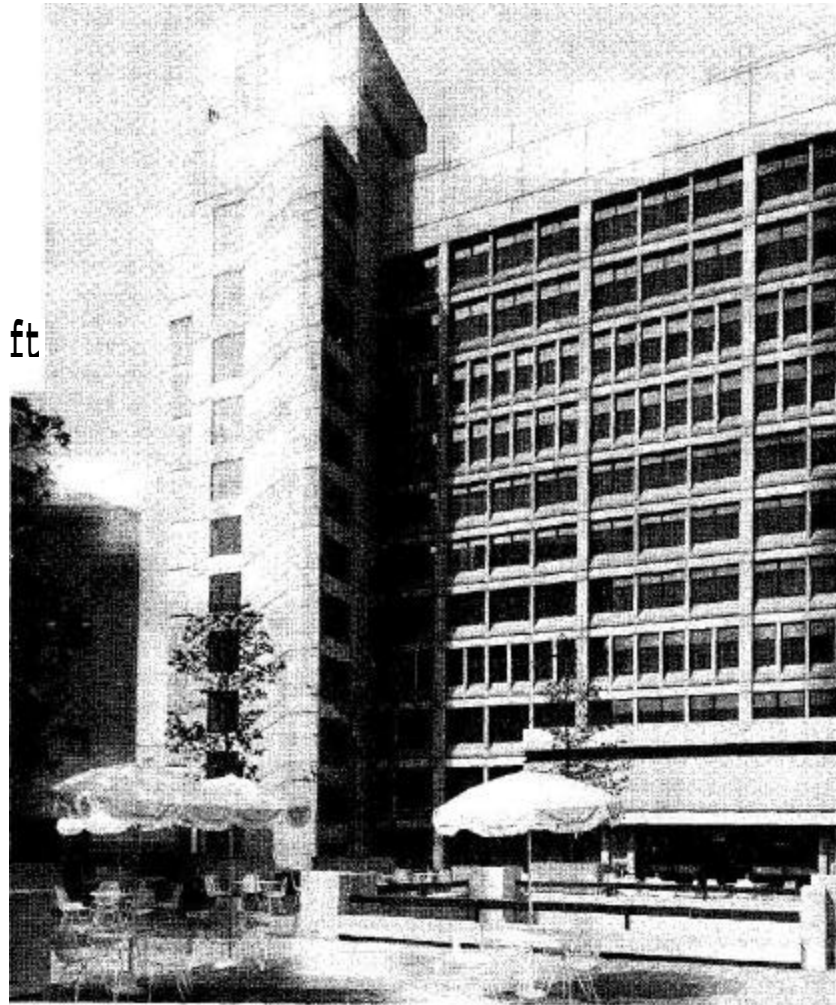
The Children's Hospital Center is the principal pediatric teaching hospital of Harvard University and a good source for securing referrals of patients who are mentally retarded. The Center serves as a teaching facility in social service, psychology, physical therapy, audiology, and special education for trainees assigned from Simmons College, Northeastern University, Wheelock College and Boston University. In 1929 the Children's Hospital Center created the first inpatient unit in the country where retarded children could be studied and evaluated by a team composed of pediatricians, neurologists, psychologists, and social workers with consultation available in other appropriate specialties including orthopedic surgery, psychiatry, and neurosurgery. The School of Nursing already provides teaching in the care of the mentally retarded. The Simmons College School of Physiotherapy is based at the Children's Hospital with special training being provided for the retarded child with orthopedic handicaps. Teaching in the field of communication disorders is provided. The University-Affiliated Facility is located in the Children's Hospital Medical Center complex.

Patients of the University-Affiliated Facility will be referred by various clinics and divisions of the hospital and by physicians and community agencies. The Children's Hospital Center serves most of the New England region and is a community hospital for a significant portion of the pediatric population in the Boston area. Where additional consultation in neurology, psychiatry, neurosurgery, otolaryngology, and orthopedic surgery is required, these services will be provided. The University-Affiliated Facility provides a nursery school for intensive observation or for diagnosis and evaluative purposes. After multiple studies have been concluded, evaluation of the patient and needs of family will be discussed and determined and a definitive program will be established.

The University Affiliated Facility maintains close liaison with several schools specializing in the training of nursery school teachers and programs of special training of teachers in the field of mental retardation. A modest program in vocational counseling, under the auspices of the Society for Crippled Children, has been in effect for the past several years.

The Facility is principally staffed by the departments of medicine, psychiatry, communication disorders, neurology and the divisions of psychology and speech and hearing of the Hospital Center. Affiliated training programs with other universities are supervised through the director of the Center with the appropriate heads of departments.

Total Cost:	\$1,276,500
Federal Share:	863,250 July
Date of Award:	1965 December 5,
Completion Date:	1967



Children's Hospital Medical Center, Boston, Massachusetts

11. EUNICE KENNEDY SHRIVER CENTER, WALTHAM, MASSACHUSETTS

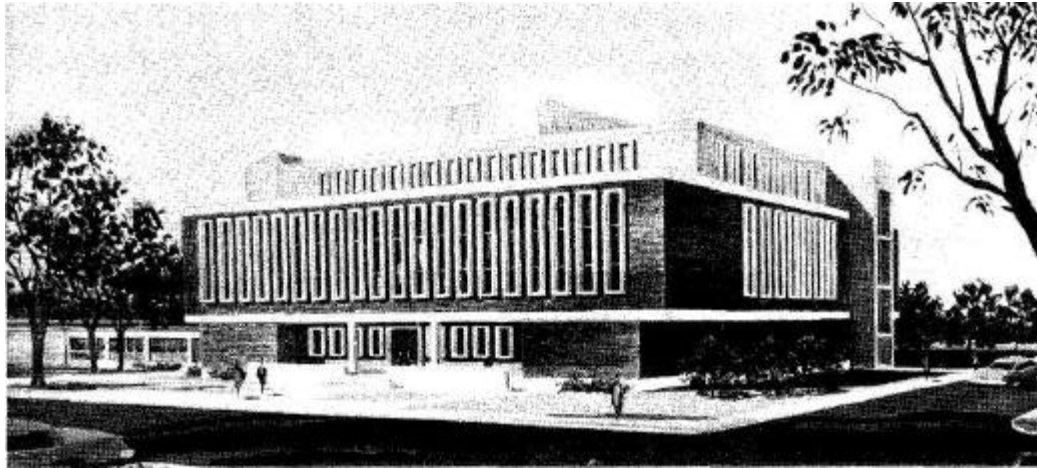
The Walter E. Fernald State School for the Mentally Retarded, which is affiliated with the Massachusetts General Hospital and through it, with Harvard University, is the site of both a University-Affiliated Facility and a Center for Research on Mental Retardation. The Center for Research received a separate award of funds under Part A of P.L. 88-16A. These two new units make up the Eunice Kennedy Shriver Center. The Center has two main purposes:

- (1) To establish research and professional training programs in all the disciplines concerned with the care of the retarded; and
- (2) To utilize the talents and accomplishments of the research and professional training staff to develop outstanding service programs for both the outpatient and the residential units.

Research programs are conducted in biochemistry, dentistry, epidemiology, genetics, neurology, neuropathology, pediatrics, psychology, psychiatry and special education. There are professional training programs in these same disciplines and also neuroradiology, nursing, nutrition, occupational therapy, ophthalmology, physical therapy, social service, speech pathology and audiology. In addition to the affiliations with Harvard University, joint training and research programs have been established with Boston College, Boston University, Brandeis University, Emerson College, the Massachusetts Institute of Technology, Simmons College and Tufts University.

Service programs are being carried out in close cooperation with the recently developed Statewide plan. Emphasis has been on the development of community resources, particularly those which offer alternative patterns of care to residential placement for the mildly and moderately retarded, and the provision of a therapeutic residential environment which will encourage the emotional, social and intellectual development of the profoundly and severely retarded.

Total Cost:	\$2,219,300
Federal Share:	724,725
Date of Award:	April 1965
Completion Dates:	University-Affiliated Center - April 1967 Research Center - November 1967



Eunice Kennedy Shriver Center, Waltham, Massachusetts

12. NEW YORK MEDICAL COLLEGE
NEW YORK, NEW YORK

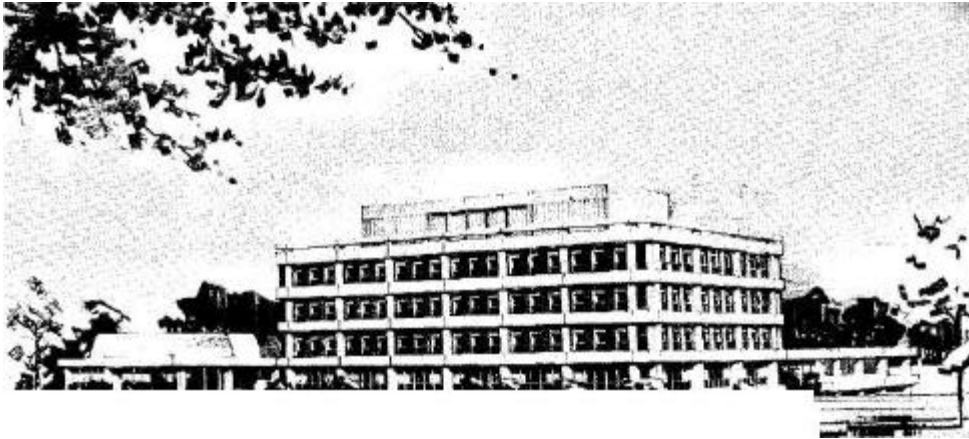
The University-Affiliated Facility is an integral part of the New York Medical College complex. The Medical College has operated a retardation Center since 1950 and has an ongoing inter-disciplinary approach to training, service, and research in the field. The University-Affiliated Facility will allow an additional 500 persons to be accepted for evaluation and service annually. A 20-bed inpatient wing will provide intensive diagnostic, treatment, and training "resources, and opportunity for observation of family-patient inter-action.

New York Medical College will improve the clinical competence of its training programs, by utilizing the Facility to provide a focal point for the diagnosis, care, treatment and rehabilitation of the retarded. With the additional facilities, it is expected that the Facility will accept 500 additional patients annually for evaluation and service. An inpatient wing of the proposed Facility will provide 28 beds for intensive diagnosis, treatment, services and training. Children from infancy through adolescence will be admitted; however, the Facility will serve patients at all levels of retardation--profound, severe, moderate, mild and border line.

The Administrative Director of the Facility is appointed by the Dean of the Medical School. The Director is responsible for the coordination of training from the affiliated universities: Columbia University, Fordham University, New York University.

Training programs will be conducted in pediatrics, psychology, neurology, psychiatry, social work, speech, nutrition, nursing, vocational rehabilitation, special education, physical and occupational therapy, dance, music and art therapy. The Training Program in mental retardation will include all levels of retardation. A variety of individuals, from profoundly to mildly retarded, with associated handicaps, will be represented in the clinical population. Provision is made for re-evaluation, longitudinal studies and management.

Total Cost: Federal Share: \$4,000,000
Date of Award: 3,000,000
Estimated Completion Date: December 1965
June 1970



New York Medical College, New York

13. UNIVERSITY OF NORTH CAROLINA
CHAPEL HILL, NORTH CAROLINA

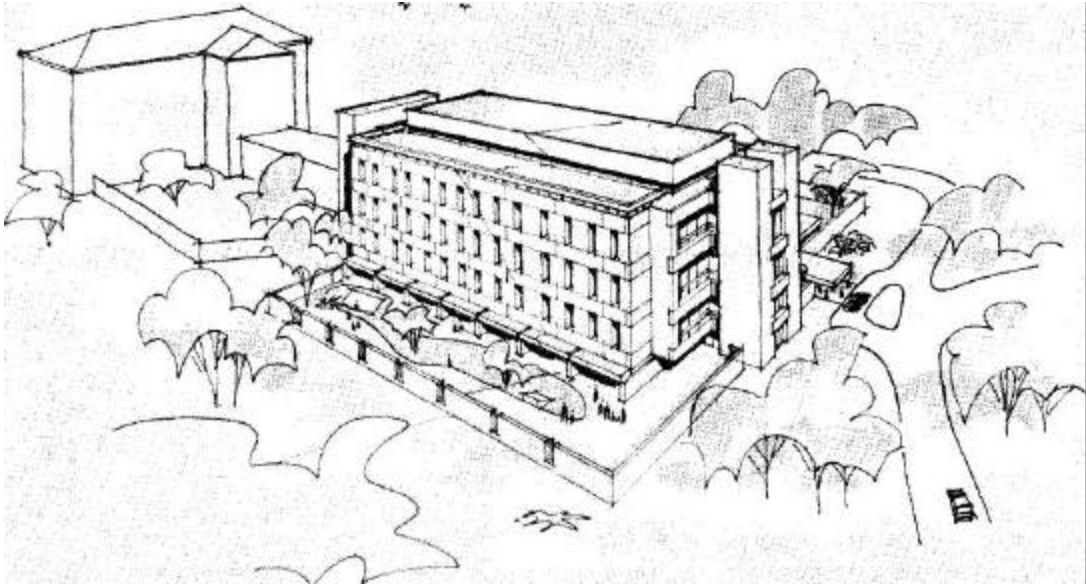
The Developmental Evaluation Clinic which is a part of the Child Development Center will be located within the University of North Carolina School of Medicine complex. Included in this complex, are the following Training Programs: Nursing, Public Health, Dentistry, Pharmacy, Education, and Psychology.

The Child Development Center is situated in the middle of the University of North Carolina Medical complex which operates within the University administrative structure as a portion of the Division of Health Affairs. An Advisory Training Committee to the Child Development Center is responsible for the development, evaluation and the design of specialized Training Programs. The members of the committee represent the various schools and colleges of the total University structure and report to the appropriate deans.

The primary function of the Clinic will be the training of professional and specialized personnel in the diagnosis, treatment and management of retarded children. Other major responsibilities will include working with practicing physicians and state-supported clinics throughout the state, and problem patients from these sources will be accepted and returned to the community after a comprehensive work-up. The Clinic will be responsible to the program director of the Child Development Center and to the advisory committee for policies and programs. It will consist of two related units: (1) the outpatient facility for intensive evaluation, and (2) a day care facility for retarded children. The outpatient facility will be staffed by a multi-disciplinary team to evaluate deviations from normal development and the establishment of treatment programs for the retardates and their families. Longitudinal follow-up will be a part of the clinic operations. The day care center will be utilized as part of the treatment program and will likewise involve a wide variety of necessary disciplines.

Approximately 150 new retarded patients will be seen and evaluated annually and a follow-up system will be instituted to cover a minimum period of 5 years and return visits will eventually increase from 1,000 to 1,200 annually. Twenty children will be enrolled in the day care unit. The day-care facility will serve as a diagnostic facility for prolonged observation of children suspected of mental retardation.

Total Cost:	\$667,748
Federal Share: (UAF)	500,811
Date of Award:	November 17, 1966
Estimated Completion Date:	June 1970



University of North Carolina, Chapel Hill, North Carolina

14. THE OHIO STATE UNIVERSITY, COLUMBUS, OHIO

This University-Affiliated Facility will provide programs in twenty-six areas concerned with prevention and problem solving in mental retardation. The Facility will also contain programs to train child care aides, home instructors, developmental and remedial physical educators, and will conduct a wide range of tutorial seminars and training sessions for currently active professional and non-degree candidates.

Coordination with the State mental retardation plan for Ohio insures that the program will meet the realistic needs of the community and the region. The training and planning has been interwoven with the community needs and is based upon interdisciplinary evaluations, management, and long-term planning. Training programs will be coordinated through a training committee which represents the appropriate schools and colleges, all of which are on the same campus.

The various colleges within the University have been quick to grasp the opportunities which the Facility training program provides: extension of the breadth of current training programs and introduction of significant areas of research for more effective prevention and limitation of the impact of mental retardation on the child.

Referral of children and their families, or young adults will be made by health, educational, or social agencies as represented by the family physician, the public health nurse, the school principal, a special class teacher, the county welfare agency or a professional person with a voluntary health agency. The children to be seen will range from the mildly to the profoundly retarded. The age range is expected to be 0-21 years, however, older persons may be considered for assessment.

From the ambulatory or outpatient evaluations area, arrangements can be made to admit a patient to one of the 22 inpatient beds for further studies. Other indications for admission will be the occurrence of acute illness, children who are being cared for but cannot be managed at home, and social crisis of short duration in the family.

Complementing the inpatient and outpatient services as an integral part of the Facility operation is a Family Evaluation Unit made up of six motel-like facilities which will enable the family of the retardate to stay for the short time necessary for evaluation. There will also be an adolescent unit made up of 28 beds (14 for boys, 14 for girls), concerned primarily with preparing previously institutionalized retardates in their teens and late teen for return to the community.

Total Cost:	\$4,950,000
Federal Share:	3,600,000
Date of Award:	January 1969
Estimated Completion Date:	July 1971



Ohio State University, Columbus, Ohio

15. UNIVERSITY OF OREGON, PORTLAND AND EUGENE, OREGON

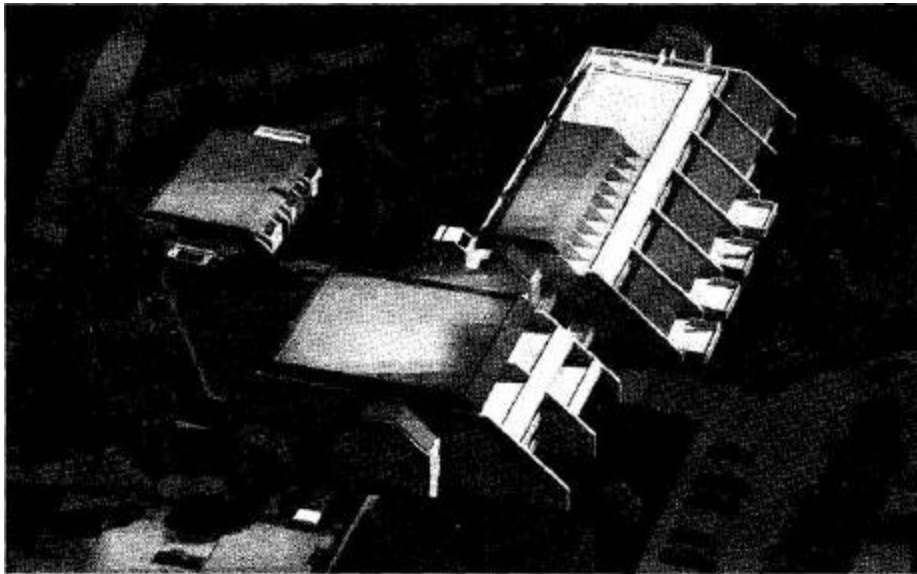
The Center will consist of two Facilities, one in Portland on the Medical School campus and one in Eugene on the University of Oregon campus. Both units will become the components of an ongoing professional training and demonstration program. The proposed inter-campus Center plan is predicated on the successful experience in a similar program in speech pathology and on 18 months experience with an ongoing pilot project in mental retardation being carried on at both campuses.

The Crippled Children's Division of the Medical School will implement the policy of the University-Affiliated Facility and the Oregon School of Education at Eugene will plan and execute the curriculum and course work for joint training of special education personnel in mental retardation and handicapping conditions.

The School of Social Work at Portland State College and the State Department of Special Education will participate- in the training program to meet the training needs of the State. A physician with specialized training in the field of pediatrics will be assigned by the Medical School to the Eugene facility to be responsible for the medical and biological aspects of the teaching program on the University campus.

The Center will make it possible to coordinate and expand the present clinical services provided for the mentally retarded. The Center will have as its objectives: the further development of ongoing training programs; the expansion of the Mental Retardation Laboratory Clinic; the development and enrichment of curriculum development; the provision of an adequate number of specialized personnel needed within the communities of the State for the mentally retarded; the introduction of the interdisciplinary team concept for exemplary patient care; the training of graduate and post-graduate students in the biomedical and behavioral sciences; development of short-term courses and institutes for practitioners in medicine, dentistry, and allied health personnel to enhance the opportunity for individual trainees to benefit in a multidisciplinary setting.

Total Cost:	\$5,072,000
Federal Share:	3,706,500
Date of Award:	August 1966
Estimated Completion Date:	Portland: January 1970 Eugene: December 1970



University of Oregon, Eugene Oregon

16. UNIVERSITY OF TENNESSEE, MEMPHIS, TENNESSEE

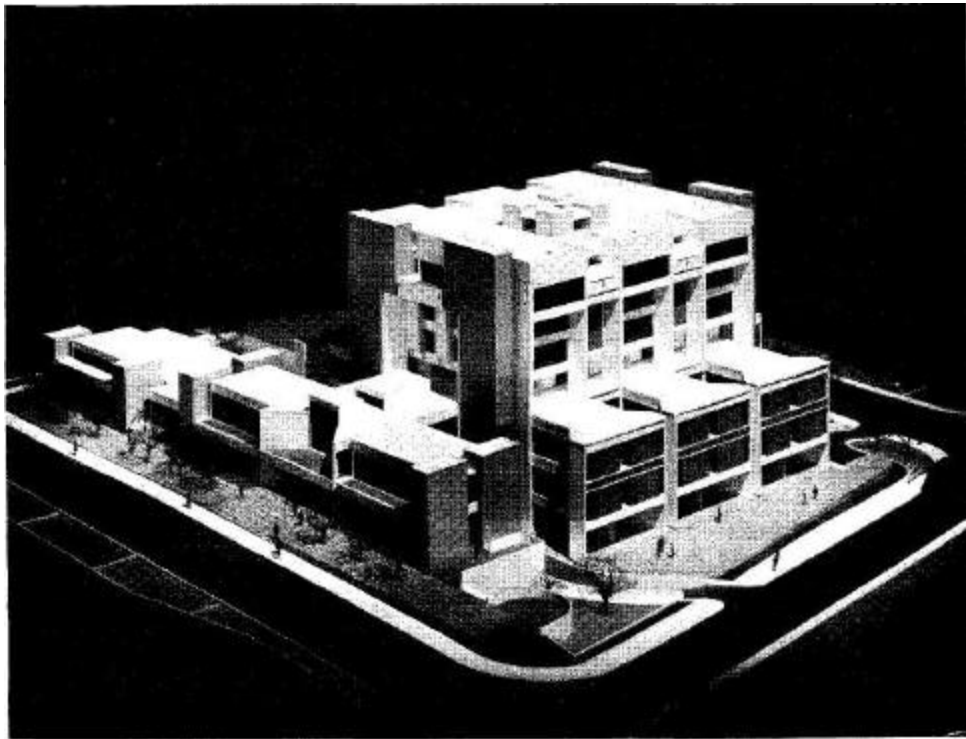
The University-Affiliated Facility, known as the University of Tennessee Child Development Center, is part of the University of Tennessee Medical Center, and, like its parent organization, serves the mid-south area. The Child Development Center provides direct services to the mentally retarded; functions as an information and referral agency, and also serves as a clinical training facility for students enrolled in several mid-south universities and colleges. A large percentage of the patient population is in the lowest socio-economic group which constitutes the high-risk segment of the mentally retarded population within the state. The staff of the Center has been active in the Memphis area in developing special education classes in public schools for the educable and the trainable, the development of a day care program for the severely retarded, the development of a preschool program for the mildly and the moderately retarded, the development of sheltered workshops, and the development of special classes for children with visual-perceptual motor handicaps.

Training is offered in several medical specialities, dentistry, nursing, speech pathology and audiology, psychology, nutrition, social work, special education, rehabilitation counselling, occupational therapy, and physical therapy. Training efforts are directed at both graduate and undergraduate levels. In addition to inpatient and outpatient service programs and special education classes, a day care program and a preschool program are planned.

The Center will provide improved services and education in the special education classes and teachers from Memphis State University in the training program will receive a practicum experience by observation of the retarded child from the diagnostic and evaluative process through the classroom experience. The inpatient facilities will permit more intensive

studies of patients and increase the training and research potential. Closed circuit television and one-way viewing windows in observation rooms will be utilized to observe the inter-disciplinary approach in combating retardation.

Total Cost:	\$4,266,280
Federal Share:	3,199,710
Date of Award:	March 1966
Estimated Completion Date:	January 1970



University of Tennessee, Memphis, Tennessee

17. UTAH STATE UNIVERSITY, LOGAN, UTAH

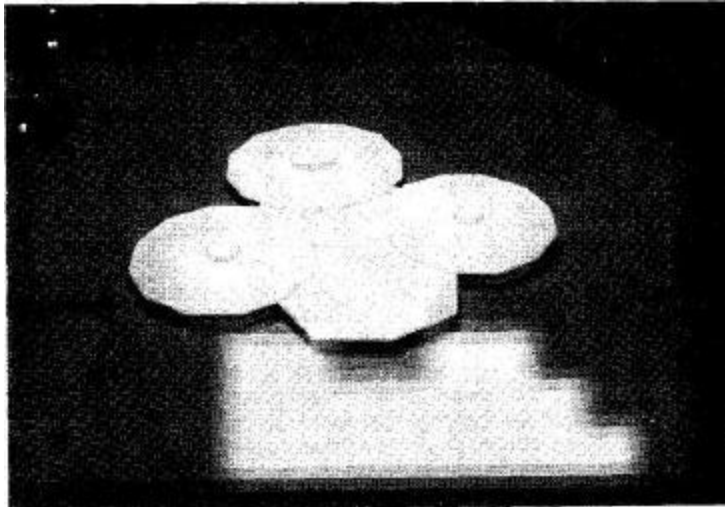
This University-Affiliated Facility will be located on the Logan campus adjacent to the north wing of the Edith Bowen Laboratories School. The Departments of Special Education, Psychology, Social Work, Audiology-Speech Pathology, Family Life and Child Development, Elementary Education and the Department of Health, Recreation and Physical Education will cooperate in using the facility for the training of professional personnel in the field of mental retardation.

Students from the Department of Special Education, Utah State University, and Idaho State University, will receive specialized training in educational diagnosis of retarded children that will be extended to master degree candidates in remedial reading and in mental retardation. Students in psychiatry at the College of Medicine at the University of Utah will

participate in short-term internships established in cooperation with the Director of Child Psychiatric Services at the College of Medicine. Students in nursing training at Weber State College will participate in short-term internships for training in medical training required by retarded persons who receive comprehensive diagnosis and evaluation.

The administration of the Facility will be under the direction of the Dean of the College of Education who will be assisted by the Head of Department of Special Education. An advisory board will be established whose functions will consist of the development of long-term program plans for future expansion of the Facility; clarification of problems involving interagency communication; review of training proposals; and consultation in hiring of personnel.

Total Cost:	\$911,406
Federal Share:	682,054
Date of Award:	February 1968
Estimated Completion Date:	January 1971



Utah State University, Logan, Utah

]8 . UNIVERSITY OF WISCONSIN, MADISON, WISCONSIN

The University of Wisconsin Center in Mental Retardation and the Related Aspects of Human Development will provide a unique opportunity for training professional personnel in a multi-disciplinary approach to in-patient research and clinical services in the area of mental retardation. The Center is composed of a University-Affiliated Facility and a Research Facility funded under Title I, Part A of P.L. 88-164.

The Director of the Center is responsible to the Vice-President of the University. The Center Director has the responsibility for coordination of the many activities being carried on in the Center. He is responsible for coordination of : the Biomedical Services Research Unit; the School Rehabilitation Unit; the High Risk Population Laboratory; and the Central Wisconsin Colony Unit. He is also responsible for developing and monitoring the Center training programs.

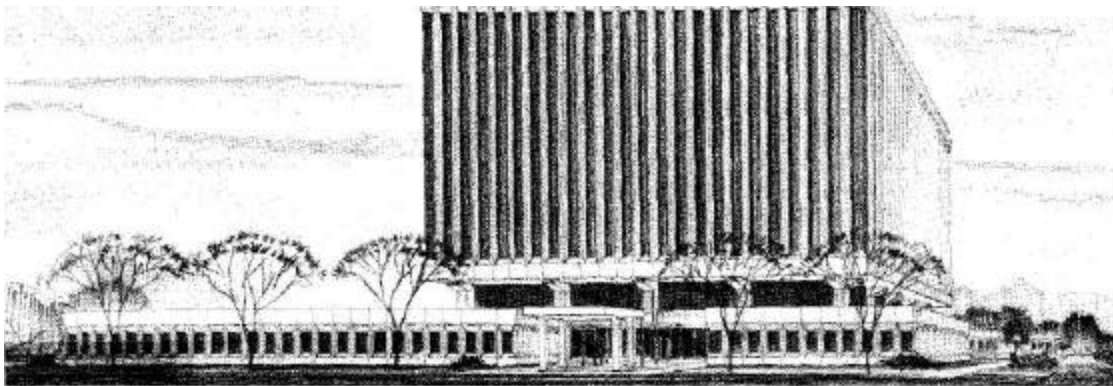
The programs to be conducted within the University-Affiliated Facility are structured so they will provide appropriate training in the research aspects of mental retardation as well as the training of professional personnel in the various disciplines considered necessary to provide a full range of services for the diagnosis and treatment, education, training, or care of the mentally retarded.

The Diagnostic and Treatment Outpatient Unit of the Facility will provide a full range of disciplines required in the comprehensive diagnosis of the mentally retarded, and it will serve as a major training resource for students in all fields represented and will provide a unique opportunity for interdisciplinary training.

The Central Wisconsin Colony Inpatient Unit of the Facility will be an integral resource because of its unique relationship with the University in providing training opportunities for faculty and students of the University of Wisconsin. (The units located at the Central Wisconsin Colony do not receive any federal construction support.)

The School Rehabilitation Unit of the Facility will have as its major objectives: the development and demonstration of new and improved techniques of education and rehabilitation; and the training of teachers and vocational rehabilitation personnel.

Total Cost: Federal Share	\$6,992,731
UAF: Federal Share	2,616,783
Research: Date of Award:	2,263,000
Estimated Completion Date:	January 1969 December 1971



University of Wisconsin, Madison, Wisconsin

ADDENDUM: MENTAL RETARDATION CHILD DEVELOPMENT CENTER, UNIVERSITY OF WASHINGTON,
SEATTLE, WASHINGTON

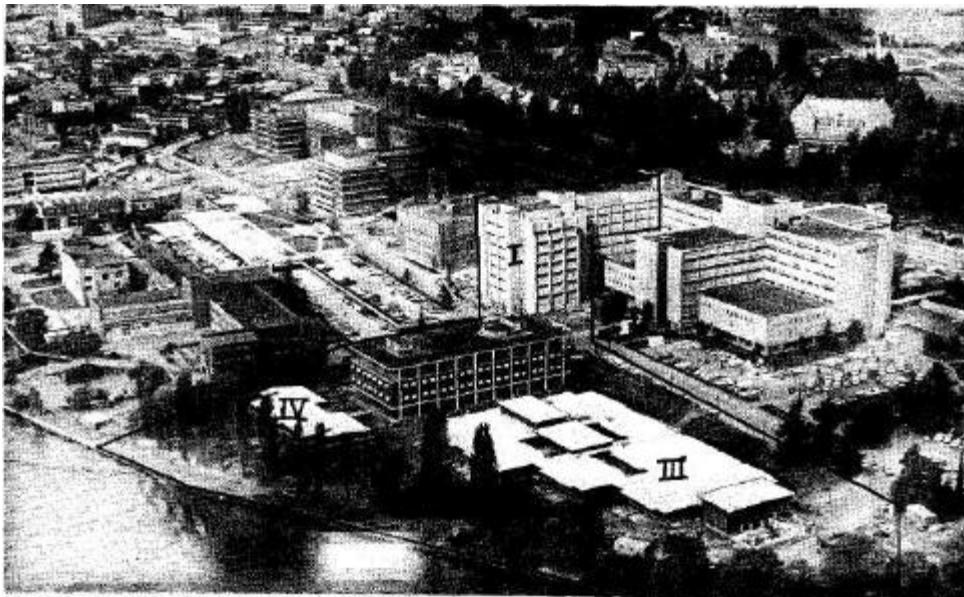
The Mental Retardation Child Development Center is comprised of both a training and a research program which was funded in its entirety under Title I, Part A, of P.L. 88-164. (See Page2)

The training program offers comprehensive mental retardation child development training to medical students, pediatric residents, and post-doctoral fellows, speech and hearing trainees and fellows, nutrition trainees and fellows, psychology graduate students and interns, psychiatry residents and fellows, nursing undergraduates, pre- and post-masters students, and graduate social work students. In addition to the clinical research conducted in this setting, much effort is devoted to developing and maintaining extensive community/State relationships in both service and training.

The Behavioral Science Research Program in Psychology, Psychiatry, and Communications conducts clinical research program projects in this area which are closely integrated with other program units of the Center.

The Experimental Education Program provides a twelve classroom school facility for research and some multidisciplinary training in an educational setting in technological and behavioral aspects of teaching handicapped children. An estimated 150 students will be enrolled in this unit when in full operation.

A Residence Unit is designed to conduct training and research efforts in family interaction, and child-mother relations in a home environment. With television, audio and observation capabilities in each apartment unit, it provides significant expansion of total evaluation capabilities. Of the thirteen apartment units, one is for a resident manager, two for the Behavioral Science Research Program, and ten are related to the Clinical Training Unit.



Child Development and Mental Retardation Center, University of Washington, Seattle, Washington

University-Affiliated Facilities
Funded as of April 11, 1969

Institutions	Total Cost	Federal Share	Estimated/Completion Date
University of Alabama Birmingham and Tuscaloosa	\$2,907,326	\$2,180,494	Birmingham: January 1969 Tuscaloosa: October 1968
University of California Los Angeles, California	6,330,000		2,638,335 December
University of Colorado Denver, Colorado	602,884		369,000
Georgetown University Washington, D. C.	2,000,000		1,500,000 October
University of Miami Miami, Florida	4,872,575	3,054,432	December 1970
Georgia Retardation Center Atlanta: 17,387,852 Atlanta and Athens, Georgia Athens:	2,137,248	1,206,450	June 1969
Indiana University Indianapolis and Bloomington, Indiana	4,277,635	1,887,713	June 1969
University of Kansas Lawrence, Kansas City and Parsons, Kansas	3,860,000	3,157,231	Riley Hospital: January 1970 Bloomington: August 1969
JFK Institute Baltimore, Maryland	3,147,000	2,729,400	December 1970
Children's Hospital Center Boston, Massachusetts	1,276,500	2,360,250	November 1967
Eunice Kennedy Shriver Center Waltham, Massachusetts	2,219,300	863,250	September 1967
New York Medical College New York, New York	4,000,000	724,725	April 1967
University of North Carolina Cost of Center for Chapel Hill, North Carolina Disorders: 667,748		3,000,000	January 1970
Ohio State University Columbus, Ohio	4,950,000	500,811	June 1970
University of Oregon Portland and Eugene, Oregon.	5,072,000	3,600,000	July 1971
		3,706,500	Portland: January 1970 Eugene: December 1970

Institutions	Total Cost	Federal Share	<u>Estimated/Completion Date</u>
University of Tennessee Memphis, Tennessee	\$4,266,280	3,199,710	January 1970
Utah State University Logan, Utah	911,406	682,054	January 1971
University of Wisconsin Madison, Wisconsin	Total cost of Center: <u>6,992,731</u>	<u>2,616,783</u>	December 1971
Total:	\$73,423,485	\$39,977,138	

COMMUNITY FACILITIES FOR THE MENTALLY RETARDED

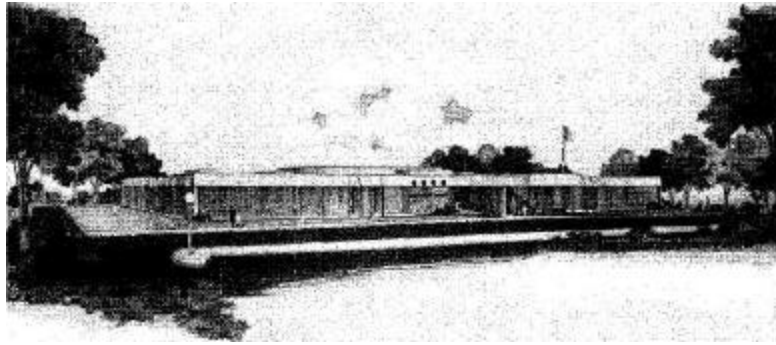
The Community Facilities Construction Program was authorized under Title I, Part C of the "Mental Retardation Facilities and Community Mental Health Centers Construction Act of 1963" (P.L. 88-164) and provides Federal grants to States to assist in the construction of specially designed public or other nonprofit facilities for the diagnosis, treatment, education, training, or personal care of the mentally retarded, including sheltered workshops which are part of facilities providing comprehensive services. A list of definitions describing both the facilities and the services is included on page 57. The program is administered at the State level by an officially designated State agency. Participation in the program requires the development of a State plan for the construction of community facilities for the mentally retarded based on an inventory of needed additional services and facilities. Construction projects are approved in accordance with the provisions of the State plan. Designated State agencies and allocations for construction of community facilities for the mentally retarded are shown on pages 58-63.

As of December 31, 1968, 242 projects had been approved for Federal assistance. The projects are classified by function; additional data are included in tabular form on pages 41-56.

The approved projects involve 223 facilities, several of which have received approval for more than one project. Of the 242 projects, 55 have been completed, 101 are under construction and 86 are in the initial approval stage. The total estimated cost is approximately \$143.5 million and the estimated Federal share is \$48.4 million. Upon completion the projects will provide services to more than 63,000 retardates of which 24,000 have not previously received services, and 39,000 will be provided improved and more extensive services.

This construction program is administered by the Division of Mental Retardation, Rehabilitation Services Administration, Social and Rehabilitation Service, U. S. Department of Health, Education, and Welfare.

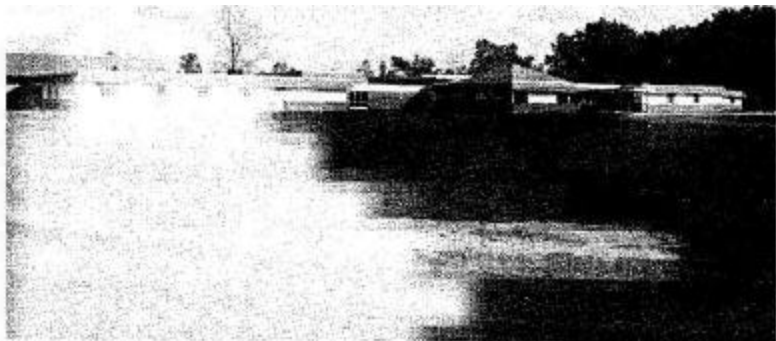
COMMUNITY FACILITIES FOR THE MENTALLY RETARDED



Blue Grass School for Retarded Children
Lexington, Kentucky



Las Trampas School, Lafayette, California



Marvin E. Beekman Center, Lansing, Michigan

(As of December 31, 1968)

[illegible]

STATE STATUS/NAME OF FACILITY	LOCATION	OWN	TYPE OF FAC.	SERVICES AVAILABLE						RETARDED SERVED				AGE GROUPINGS			ESTIMATED COST (IN THOUSANDS)				
										NUMBER			LEVELS OF RETARDATION				PRE- SCH. SCH. ADLT.			TOTAL	FEDERAL SHARE
				D&E	TRT.	EDU	TRC	PC	SWS	PRES.	ADD.	TOT.	MLD.	MOD.	SEV.	PROF.	SCH.	SCH.	ADLT.		
MONTANA																					
2 Boulder River School & Hospital	Boulder	P	R	X	X	X	X	X		30	219	249	X	X	X	X	X	X	X	\$ 2,030	\$ 539
2 Eastern Montana Facility for the Mentally Retarded	Glendive	P	D,R	X	X	X	X	X	X	-0-	46	46	X	X				X		347	183
NEVADA																					
1 Opportunity Center	Las Vegas	NP	D			X	X	X		34	66	100	X	X	X		X	X	X	216	74
1 Mentally Retarded Children's Cottages	Las Vegas	P	R	X	X	X	X	X	X	-0-	24	24	X	X	X			X		227	77
1 Washoe Association for Retarded Children Development Center	Reno	NP	D			X	X	X		17	36	53	X	X	X		X	X	X	146	50
1 Mentally Retarded Children's Cottages	Sparks	P	R	X	X	X	X	X	X	-0-	24	24	X	X	X			X		228	76
NEW HAMPSHIRE																					
3 Mary Hitchcock Memorial Hospital	Hanover	NP	D	X	X			X		233	585	838	X	X	X	X	X	X	X	233	117
3 Laconia State School	Laconia	P	R	X	X	X	X	X		976	100	1,076	X	X	X	X	X	X	X	381	191
NEW JERSEY																					
3 Camden County Day Care Center	Cherry Hill	P	D				X	X		5	75	80			X	X		X		434	153
2 Somerset County Day Care Center	Hillsborough	P	D				X	X		8	32	40			X	X		X		427	137
2 Warren County Day Care Center	Mansfield	P	D				X	X		13	27	40			X	X		X		392	139
2 Alhambra Pavilion Day Care Center	Newark	NP	D	X	X	X	X	X		30	90	120	X	X	X		X	X		535	194
2 Passaic County Day Care Center	Totowa	P	D				X	X		16	64	80			X	X		X		469	124
3 Mercer County Day Care Center	Trenton	P	D				X	X		16	64	80			X	X		X		529	124
2 Cumberland County Day Care Center	Vineland	P	D				X	X		8	40	48			X	X		X		352	124

STATE STATUS/NAME OF FACILITY	LOCATION	OWN	TYPE OF FAC	SERVICES AVAILABLE						RETARDED SERVED				AGE GROUPINGS			ESTIMATED COST (IN THOUSANDS)			
										NUMBER			LEVELS OF RETARDATION				PRE- SCH. SCH. ADLT.			TOTAL
				D&E	TRT	EDU	TRG	PC	SWS	PRES.	ADD.	TOTAL	MILD.	MOD.	SEV.	PROF.	SCH.	SCH.	ADLT.	
NORTH CAROLINA																				
1 Irene Wortham Day Care Center	Asheville	NP	D		X	X	X	X		29	35	64	X	X	X	X	X	X	\$ 213	\$ 132
2 Facility for the Mentally Retarded	Butner	P	R		X	X	X	X	X	-0-	36	36	X	X			X		304	318
2 Western Carolina University Mental Health Center & Mental Retardation Facility	Cullowhee	P	D		X	X	X	X	X	208	222	430	X	X	X	X	X	X	323	168
2 Gaston Children's Center	Gastonia	P	D		X	X	X	X	X	-0-	60	60	X	X	X	X	X	X	385	236
2 East Carolina Sheltered Workshop & Vocational Rehabilitation Center	Greenville	NP	D		X	X	X	X	X	-0-	100	100	X	X	X		X	X	285	179
1 East Carolina University Developmental Evaluation Center	Greenville	P	D		X	X	X	X	X	234	92	326	X	X	X	X	X	X	239	148
NORTH DAKOTA																				
2 Neuropsychiatric Institute	Fargo	NP	D&E		X				X	-0-	180	180	X	X	X	X	X	X	365	216
OHIO																				
2 Lorain County School for Retarded Children	Carlisle Twnshp	P	D		X				X	355	121	476		X	X	X	X	X	1,683	318
3 Bessie Benner Metzenbaum Opportunity School	Chesterland	P	D			X		X	X	66	48	114		X	X	X	X	X	280	23
3 Resident Home for the Mentally Retarded of Hamilton County	Cincinnati	NP	D,R		X	X		X	X	-0-	50	50		X	X		X	X	212	73
1 Montgomery County Retarded Children's School	Dayton	P	D		X	X	X		X	318	200	518		X			X		2,066	397
2 Columbiana County School for Retarded (Robert Bycroft School)	Lisben	P	D			X		X	X	97	23	120		X	X	X	X	X	400	107
3 Richland County School for the Mentally Retarded	Mansfield	P	D		X	X	X		X	163	146	309		X	X		X	X	478	116
1 Hattie Larlham Foundation	Nantua	NP	R		X	X			X	54	100	154		X	X	X			386	125

STATE STATUS/NAME OF FACILITY	LOCATION	OWN	TYPE OF FAC.	SERVICES AVAILABLE D&E TRT EDU TRG PC SWS	RETARDED SERVED										ESTIMATED COST (IN THOUSANDS)					
					NUMBER			LEVEL OF RETARDATION				AGE GROUPINGS			TOTAL	FEDERAL SHARE				
					PRES.	ADD.	TOTAL	MILD.	MOD.	SEV.	PROF.	PRE- SCH.	SCH.	ADLT.						
WEST VIRGINIA																				
1 Region I Center for the Mentally Retarded	Institute	P	D			X	X	X		25	35	60		X	X	X	X	\$ 305	\$ 186	
2 Green Acres	Le Sage	P	R			X	X	X		28	20	48	X	X			X	X	262	160
2 Roney's Point	Roney's Point	P	D					X	X	-0-	80	80			X			313	191	
WISCONSIN																				
1 Walworth County Special School	Elkhorn	P	D			X	X	X	X	X	225	90	315	X	X	X		X	793	298
3 Community Service Center	Green Bay	NP	D			X	X	X	X	X	100	300	400	X	X	X	X	X	891	335
2 Kenosha Achievement Center	Kenosha	NP	D			X	X	X	X	X	27	33	60	X	X	X	X	X	263	101
WYOMING																				
2 School for Trainable Retarded Children & Work Training Center	Casper	P	D			X	X	X	X	X	70	98	168	X	X	X	X	X	436	211
1 Wyoming State Training School	Lander	P	R			X	X	X	X	X	-0-	94	94	X	X	X		X	200	100

*CODES OR ABBREVIATIONS

Status - (1) Initial Approval (2) Under Construction
(3) Completed

Ownership - OWN
Nonprofit - NP
Public - P

Type of Facility

Diagnostic and Evaluation Clinic - D&E
Day Facility - D Residential Facility -
R

Services Available

Diagnostic and Evaluation - D&E
Treatment - TRT
Education - EDU
Training - TRQ
Personal Care - PC
Sheltered Workshop - SWS

Retarded Served
Number

Presently - PRES
Additional - ADD
Total - TOT

Levels of Retardation

Mild - MLD
Moderate - MOD
Severe - SEV
Profound - PROF

Age Groupings

Preschool - PRESCH
School - SCH
Adult - ADLT

Estimated Cost-In Thousands

Total Cost - TOTAL Federal
Share - FEDERAL SHARE

FOOTNOTES

- (1) Two Projects - one completed; one in planning stage
(2) Two Projects - one completed; one under construction
(3) Two Projects - both completed
(4) Two Projects - one completed; one in planning stage
(5) Two Projects - both under construction
(6) Two Projects - both under construction
(7) Two Projects - one under construction; one in planning stage
(8) Two Projects - one completed; one in planning stage
(9) Two Projects - both in planning stage
(10) Two Projects - one completed; one in planning stage
(11) Three Projects - all under construction
(12) Three Projects - all in planning stage
(13) Three Projects - all under construction
(14) Three Projects - all under construction
(15) Two Projects - one under construction; one in planning stage

DEFINITIONS

I. Facilities:

- A. D&E Clinic (Diagnostic and Evaluation Clinic): A facility providing diagnostic and evaluation services only.
- B. Day Facility: A facility operating for care and treatment of the mentally retarded on less than 24 hour-a-day basis, providing diagnosis (and evaluation), treatment, education, training, personal care or sheltered workshop services.
- C. Residential Facility: A facility operating for care and treatment of the mentally retarded on a 24 hour-a-day basis providing diagnosis (and evaluation), treatment, education, training, personal care, or sheltered workshop services.

II. Services:

- A. Diagnosis and Evaluation: Coordinated medical, psychological, social service, educational, speech pathology, audiology, nursing, occupational therapy, physical therapy, nutrition, vocational and other related services carried out under the supervision of qualified personnel to assess the individual's abilities and disabilities, and family and community resources. Based on this assessment a plan to meet the needs of the individual and his family is developed and methods of implementation recommended. Periodic reassessment of the individual where needed is an essential aspect of this Service.
- Bo Treatment: Appropriate medical, dental, physical therapy, occupational therapy, hearing therapy, psychotherapy, social service and related services carried out under the direction of qualified personnel to bring about improvement in effective physical, psychological or social functioning of the mentally retarded individual.
- C. Education: Services based on a structured curriculum of instruction carried out under supervision of teachers qualified in special education to meet the needs of the retarded in preschool, primary, intermediate, prevocational, vocational and other appropriate areas.
- D. Training: Services carried out under the supervision of qualified personnel which provide for training of the retarded individual in motor skills, activities of daily living, vocational training, personality development, socialization, recreation and other related components.

- E. Personal (custodial) Care: Services providing for the dietary, shelter, clothing, medical care, nursing and other daily personal needs of the retarded to insure proper personal care during the time the individual is utilizing the various other services offered by the facility.
- F. Sheltered Workshop: Services carried out under the supervision of qualified personnel involving a program of paid work involving work evaluation, work adjustment training, occupational skill training, supervised transitional employment, placement and other related component services.

STATE AGENCIES RESPONSIBLE FOR COMMUNITY MENTAL
RETARDATION FACILITIES CONSTRUCTION PROGRAM TITLE
I, PART C, P.L. 88-164

ALABAMA: Ira L. Myers, M.D., State Health Officer, State Board of Health, Montgomery, Alabama 36104

ALASKA: J. Scott McDonald, Commissioner, Department of Health and Welfare, Alaska Office Building, Juneau, Alaska 99801

ARIZONA: George Spendlove, M.D., Commissioner of Public Health, State Department of Health, 1624 West Adams Street, Phoenix, Arizona 85007

ARKANSAS: J. T. Herron, M.D. State Health Officer, State Board of Health, Little Rock, Arkansas 72201

CALIFORNIA: Louis F. Saylor, M.D., Acting Director of Public Health, State Department of Public Health, Berkeley, California 94704

COLORADO: Roy L. Cleere, M.D., Director, State Department of Public Health, Denver, Colorado 80220

CONNECTICUT: Franklin M. Foote, M.D., Commissioner, State Department of Health, 79 Elm Street, Hartford, Connecticut 06115

DELAWARE: Floyd I. Hudson, M.D., Executive Secretary, State Board of Health, Dover, Delaware 19901

DISTRICT OF
COLUMBIA: Murray Grant, M.D., Director, Department of Public Health, Washington, D.C. 20001

FLORIDA: James G. Foshee, Ph.D., Director, Division of Mental Retardation, Board of Commissioners of State Institutions, 908 South Bronough Street, Tallahassee, Florida 32304.

GEORGIA: John H. Venable, M.D., Director, Department of Public Health, 47 Trinity Avenue, S.W., Atlanta, Georgia 30334

GUAM: Joseph H. Gerber, Acting Director of Public Health and Social Services, Department of Public Health and Social Services, Agana, Guam 96910

HAWAII: Walter B. Quisenberry, M.D., Director of Health, Department of Health, Honolulu, Hawaii 96801

IDAHO: Terrell O. Carver, M.D., Administrator of Health, State Department of Health, Boise, Idaho 83701

ILLINOIS: Director, Department of Mental Health, Chicago, Illinois 60601

INDIANA: Andrew C. Offutt, M.D., State Health Commissioner, State Board of Health, Indianapolis, Indiana 46207

IOWA: James F. Speers, M.D., Commissioner of Public Health, State Department of Health, Des Moines, Iowa 50319

KANSAS: Robert A. Haines, M.D., Director, Division of Institutional Management, State Board of Social Welfare, Topeka, Kansas 66612

KENTUCKY: Russell E. Teague, M.D., Commissioner, State Department of Health, Frankfort, Kentucky 40601

LOUISIANA: E.L. Agerton, Director, State Department of Hospitals, 655 North 5th Street, Baton Rouge, Louisiana 70804

MAINE: Dean H. Fisher, M.D., Commissioner, Department of Health and Welfare, Augusta, Maine 04330

MARYLAND: William S. Spicer, M.D., Chairman, Board of Health and Mental Hygiene, Baltimore, Maryland 21201

MASSACHUSETTS: Milton Greenblatt, M.D., Commissioner, Department of Mental Health, 15 Ashburton Place, Boston, Mass. 02108

MICHIGAN R. G. Rice, M.D., Acting Director, Department of Public Health, Lansing, Michigan 48914

MINNESOTA: Morris Hursh, Commissioner, Department of Public Welfare, Centennial Building, St. Paul, Minnesota 55101

MISSISSIPPI: Dorothy N. Moore, Ph.D., Program Director, Interagency Commission on Mental Illness and Mental Retardation, Jackson, Mississippi 39205

MISSOURI: George A. Ulett, M.D., Director, Division of Mental Diseases,
Department of Public Health and Welfare, Jefferson City,
Missouri 65102

MONTANA: John S. Anderson, M.D., Executive Officer and Secretary, State
Department of Health, Helena, Montana 59601

NEBRASKA: Lynn W. Thompson, M.D., Director, Department of Health, State
Capitol Building, Lincoln, Nebraska 68509

NEVADA: Edward F. Crippen, M.D., State Health Officer, Division of
Health, Department of Health, Welfare and Rehabilitation,
Carson City, Nevada 89701

NEW HAMPSHIRE: Mary M. Atchison, M.D., M.P.H., Director, Division of Public
Health, Department of Health and Welfare, 61 South Spring
Street, Concord, New Hampshire 03301

NEW JERSEY: Lloyd W. McCorkle, Ph.D., Commissioner, Department of Institu-
tions and Agencies, P.O. Box 1237, Trenton, New Jersey 08625

NEW MEXICO: John G. Jasper, Executive Director, Department of Public
Health and Social Services, Santa Fe, New Mexico 87501

NEW YORK: Alan D. Miller, M.D., Commissioner, Department of Mental Hygiene,
119 Washington Avenue, Albany, New York 12225

NORTH CAROLINA: William F. Henderson, Executive Secretary, North Carolina
Medical Care Commissioner, Raleigh, North Carolina 27601

NORTH DAKOTA: James R. Amos, M.D., State Health Officer, Department of
Health, State Capitol, Bismarck, North Dakota 58501

OHIO: Martin A. Janis, Director, Department of Mental Hygiene and
Correction, State Office Building, 65 South Front Street,
Columbus, Ohio 43215

OKLAHOMA: Lloyd E. Rader, Director, Department of Public Welfare,
Sequoyah Building, Box 531 61, Oklahoma City, Oklahoma 73105

OREGON: Kenneth D. Gaver, M.D., Administrator, Mental Health Division,
State Board of Control, Salem, Oregon 97310

PENNSYLVANIA: Thomas W. Georges, M.D., Secretary, State Department of
Public Welfare, Health and Welfare Building, Harrisburg,
Pennsylvania 17120

PUERTO RICO: Manuel A. Torres-Aguiar, M.D., Secretary of Health, Department
of Health, San Juan, Puerto Rico 00924

RHODE ISLAND: Joseph E. Cannon, M.D., Director of Health, Department of Health, State Office Building, Providence, Rhode Island 02903

SOUTH CAROLINA.: : E. Kenneth Aycock, M.D., State Health Officer, State Board of Health, Columbia, South Carolina 29201

SOUTH DAKOTA: G. J. Van Heuvelen, M.D., State Health Officer, State Department of Health, Pierre, South Dakota 57501

TENNESSEE: Nat T. Winston, Jr., M.D., Commissioner, Department of Mental Health, 300 Cordell Hull Building, Nashville, Tennessee 37219

TEXAS: John Kinross-Wright, M.D., Commissioner, Department of Mental Health and Mental Retardation, Austin, Texas 78756

UTAH: G. D. Carlyle Thompson, M.D., Director of Health, Division of Health, Department of Health and Welfare, 44 Medical Drive, Salt Lake City, Utah 84113

VERMONT: Jonathan P.A. Leopold, M.D., Commissioner, Department of Mental Health, State Office Building, Montpelier, Vermont 05401

VIRGINIA: Mack I. Shanholtz, M.D., State Health Commissioner, State Department of Health, Richmond, Virginia 32319

VIRGIN ISLANDS.: : Roy A. Anduze, M.D., Commissioner, Department of Health, P.O. Box 1442, St. Thomas, Virgin Islands 00801

WASHINGTON William Conte, M.D., Director, State Department of Institutions, Olympia, Washington 98501

WEST VIRGINIA: N. H. Dyer, M.D., Director, State Department of Health, Charleston, West Virginia 25311

WISCONSIN: Wilbur J. Schmidt, Secretary, Department of Health and Social Services, 1 West Wilson Street, Madison, Wisconsin 53702

WYOMING: Robert Alberts, M.D., Director, Department of Public Health, State Office Building, Cheyenne, Wyoming 82001

ALLOCATIONS TO STATES For Construction of
Community Facilities for the Mentally Retarded

	1968 1/ Actual	1969 2/ Estimate	1970 Estimate
Totals	\$12,000,000	\$12,000,000	\$8,031,000
Alabama	247,502	247,101	146,091
Alaska	100,000	100,000	100,000
Arizona	100,000	100,000	100,000
Arkansas	139,159	140,465	100,000
California	908,447	916,026	541,573
Colorado	107,804	109,285	100,000
Connecticut	132,759	132,923	100,000
Delaware	100,000	100,000	100,000
District of Columbia	100,000	100,000	100,000
Florida	341,712	343,335	202,987
Georgia	287,876	287,857	170,187
Hawaii	100,000	100,000	100,000
Idaho	100,000	100,000	100,000
Illinois	512,877	513,046	303,324
Indiana	262,416	264,230	156,218
Iowa	148,805	145,193	100,000
Kansas	123,454	123,314	100,000
Kentucky	210,329	207,763	122,834
Louisiana	242,861	243,088	143,718
Maine	100,000	100,000	100,000
Maryland	187,056	189,237	111,881
Massachusetts	264,395	263,504	155,789
Michigan	435,417	440,252	260,286
Minnesota	198,791	197,153	116,561
Mississippi	188,145	185,147	109,463
Missouri	247,788	248,706	147,040
Montana	100,000	100,000	100,000
Nebraska	100,000	100,000	100,000
Nevada	100,000	100,000	100,000
New Hampshire	100,000	100,000	100,000
New Jersey	328,075	330,780	195,564
New Mexico	100,000	100,000	100,000
New York	844,669	834,557	493,407
North Carolina	330,384	329,988	195,095
North Dakota	100,000	100,000	100,000

ALLOCATIONS TO STATES - continues For

Construction of Community Facilities for the Mentally Retarded

	1968 1/ Actual	1969 2/ Estimate	1970 Estimate
	547,763	\$ 549,394	\$ 324,813
Ohio			
Oklahoma	148,871	148,469	100,000
Oregon	105,098	105,657	100,000
Pennsylvania	606,647	602,277	356,079
Rhode Island	100,000	100,000	100,000
	188,387	188,434	111,406
South Carolina			
South Dakota	100,000	100,000	100,000
Tennessee	255,916	254,368	150,387
Texas	654,236	651,236	385,024
Utah	100,000	100,000	100,000
	100,000	100,000	100,000
Vermont			
Virginia	266,078	266,517	157,570
Washington	156,350	160,332	100,000
West Virginia	118,703	117,421	100,000
Wisconsin	226,221	224,683	132,838
	100,000	100,000	100,000
Wyoming			
Guam	6,654	7,971	4,713
Puerto Rico	221,943	222,836	131,745
Virgin Islands	4,069	4,915	2,906
American Samoa	2,343	2,540	1,501

NOTE: 1970 allocations are tentative pending receipt of revised population and per capita income data.

1/ 1968 appropriation \$18,000,000, less \$6,000,000 cost reduction.

2/ 1969 appropriation \$6,000,000, plus \$6,000,000 from 1968 cost reduction.

APPENDIX B

NUMBER OF UNIVERSITIES
APPROVED FOR CONSTRUCTION OF BOTH A UNIVERSITY-AFFILIATED
FACILITY AND A RESEARCH CENTER

Walter E. Fernald State School, Waltham, Massachusetts
University of California, Los Angeles, California
Children's Hospital, Boston, Massachusetts
University of Kansas, Lawrence, Kansas
University of Colorado, Denver, Colorado
University of North Carolina, Chapel Hill, North Carolina
University of Wisconsin, Madison, Wisconsin

DEPARTMENT OF
HEALTH, EDUCATION, **AND WELFARE**
WASHINGTON 25, D. C.

OFFICIAL BUSINESS



POSTAGE AND FEES PAID
U.S. DEPARTMENT OF H.E.W.